



NEW WARE NEWSLETTER

NEW MASKS JANUARY 2024

NWAM1166 1/48 Fairey Gannet AS.1/AS.4 BASIC kabuki masks	Airfix
NWAM1167 1/48 Fairey Gannet AS.1/AS.4 ADVANCED kabuki masks	Airfix
NWAM1168 1/48 Fairey Gannet AS.1/AS.4 EXPERT kabuki masks	Airfix
NWAM1169 1/48 Mi-4AV Hound BASIC kabuki masks	Trumpeter
NWAM1170 1/48 Mi-4AV Hound EXPERT kabuki masks	Trumpeter



Fairey Gannet AS.1/AS.4 BASIC kabuki masks

for Airfix A11007 kit

<http://mek.kosmo.cz/newware>

tom.nwkits@seznam.cz

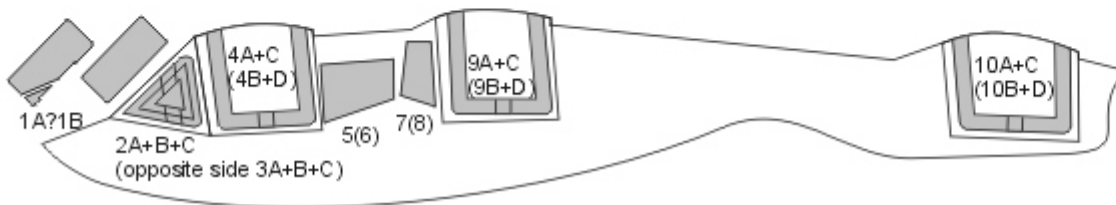
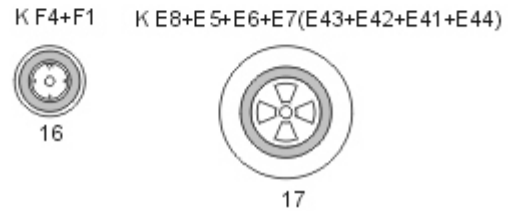
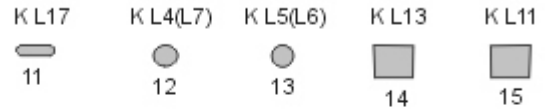
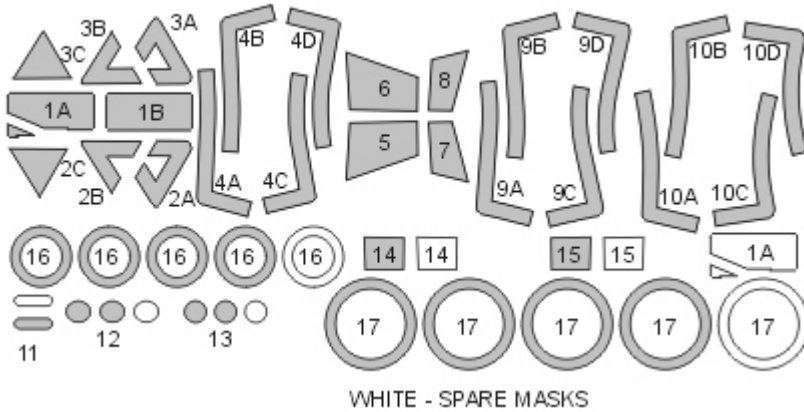
Important:

Let the sprayed color dry before applying masks. Remove masks very carefully after painting.
 Where the mask is divided into A and B parts, first apply part A, next part B.
 The set does not include masks for all areas, so mask the rest with masking tape or liquid mask.

K kit part

^ start placing the mask from this point

Placing wet masks on wet surface is recommended, except those marked by **W**





Fairey Gannet AS.1/AS.4 ADVANCED kabuki masks
for Airfix A11007 kit

INCLUDES ALSO WINDOWS
FRAMES, PROPELLER AND
CAMOUFLAGE MASKS

<http://mek.kosmo.cz/newware>

tom.nwkits@seznam.cz

Important:

Let the sprayed color dry before applying masks. Remove masks very carefully after painting.

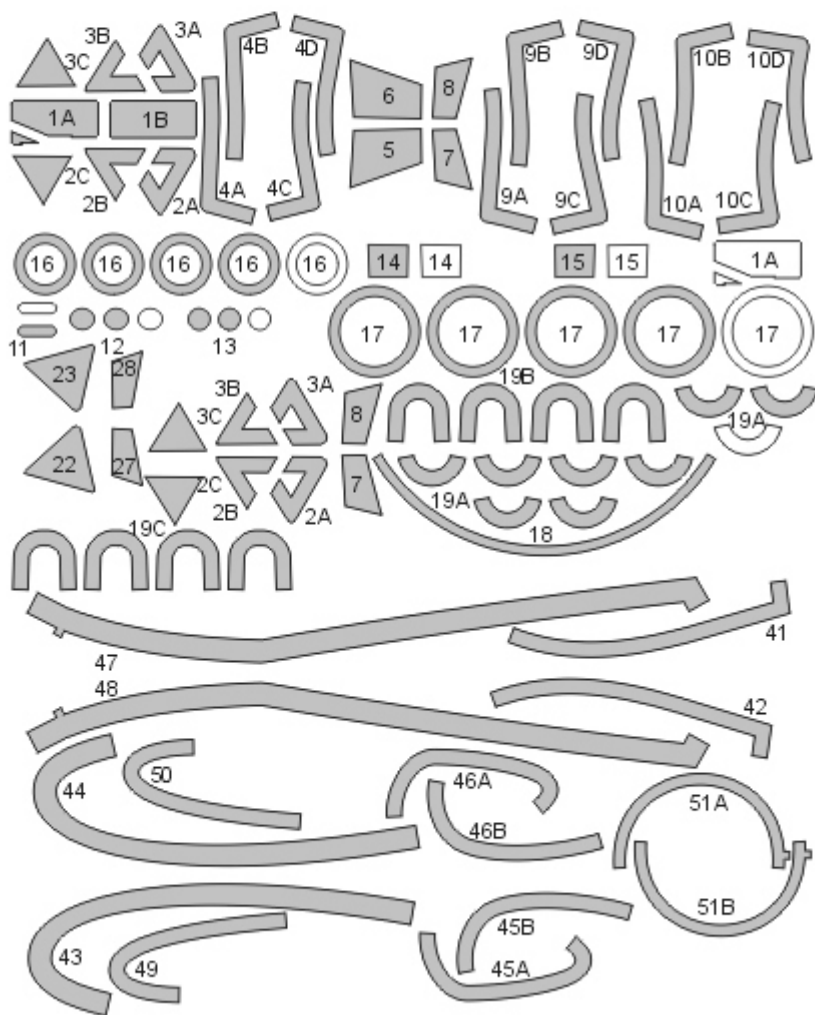
Where the mask is divided into A and B parts, first apply part A, next part B.

The set does not include masks for all areas, so mask the rest with masking tape or liquid mask.

K kit part

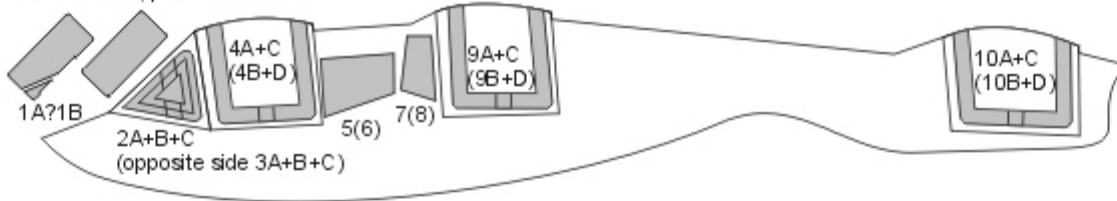
^ start placing the mask from this point

Placing wet masks on wet surface is recommended, except those marked by **W**

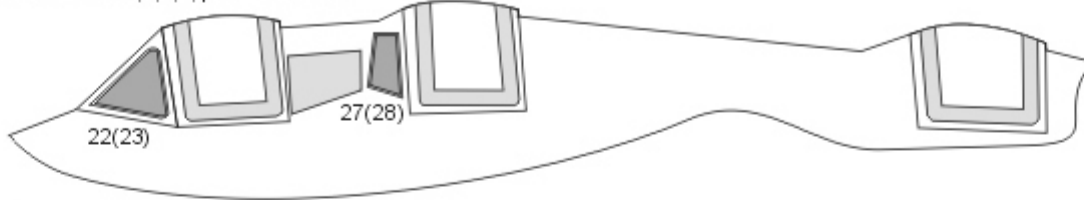


WHITE - SPARE MASKS

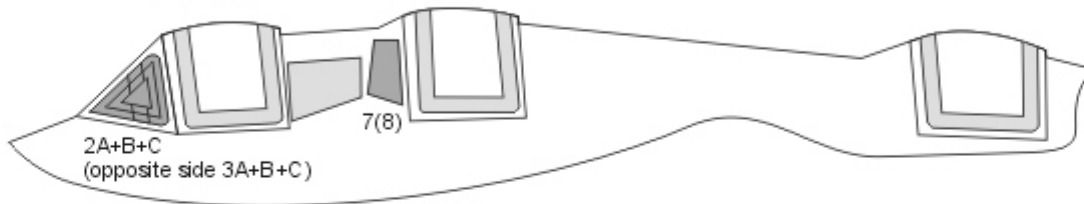
STEP 1
mask exterior, paint interior color



STEP 2
remove masks 2,3,7,8, paint frame color



STEP 3
remove masks 22,23,27,28, paint camouflage color



K L17



11

K L4(L7)



12

K L5(L6)



13

K L13



14

K L11



15

K F4+F1

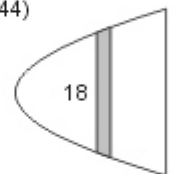


16

K E8+E5+E6+E7(E43+E42+E41+E44)



17

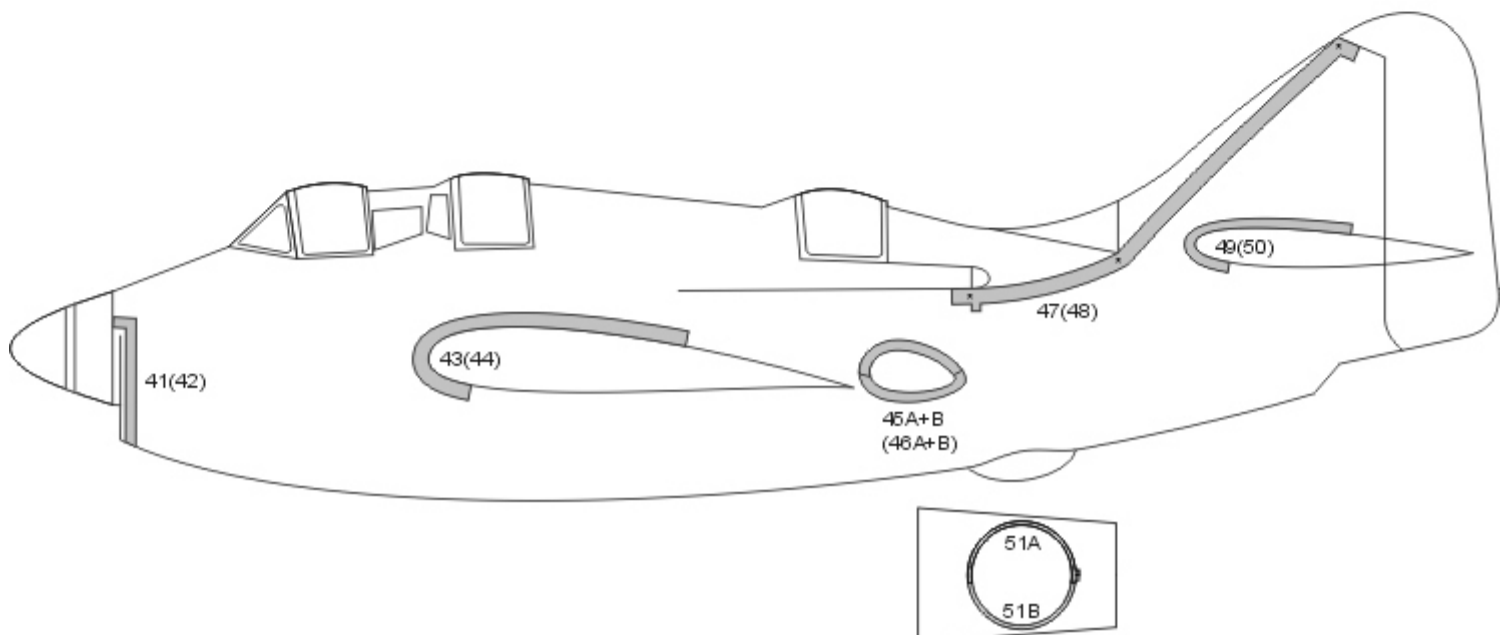


18



19A+B

19C+D





NWAM1168

Fairey Gannet AS.1/AS.4 EXPERT kabuki masks

for Airfix A11007 kit

<http://mek.kosmo.cz/newware>

INCLUDES ALSO WINDOWS
FRAMES AND INNER SIDE,
PROPELLER AND CAMOUFLAGE MASKS

1/48 scale

tom.nwkits@seznam.cz

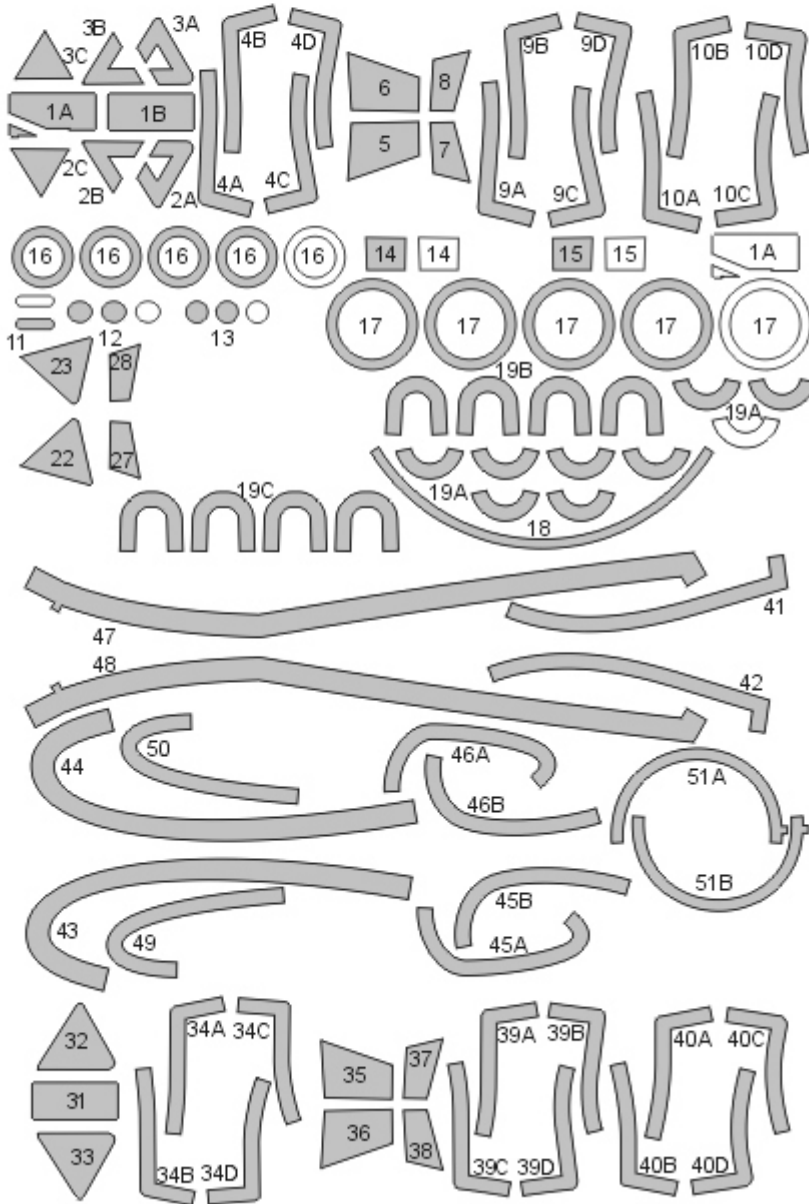
Important:

Let the sprayed color dry before applying masks. Remove masks very carefully after painting.
Where the mask is divided into A and B parts, first apply part A, next part B.
The set does not include masks for all areas, so mask the rest with masking tape or liquid mask.

K kit part

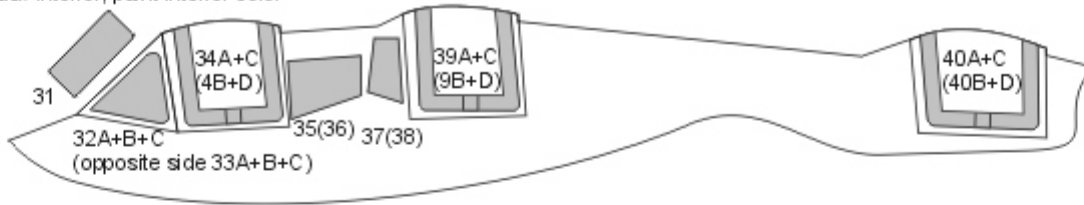
* start placing the mask from this point

Placing wet masks on wet surface is recommended, except those marked by **W**

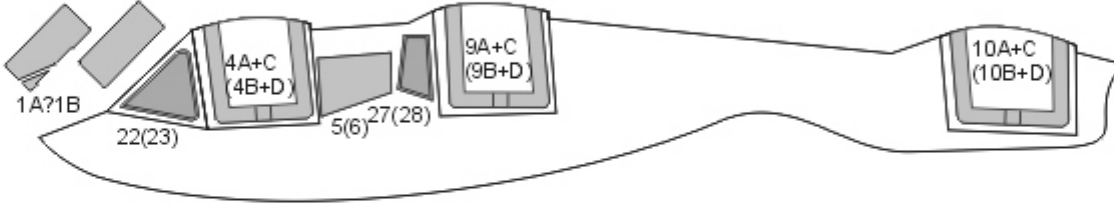


WHITE - SPARE MASKS

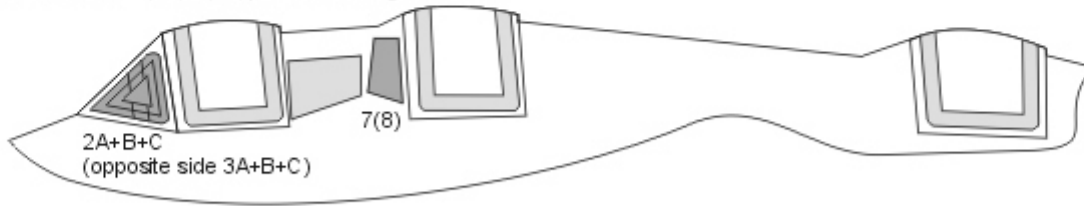
STEP 1 (exterior view)
mask interior, paint interior color



STEP 2
mask exterior, paint frame color



STEP 3
remove masks 22,23,27,28, paint camouflage color



KL17



11

KL4(L7)



12

KL5(L6)



13

KL13



14

KL11



15

KF4+F1

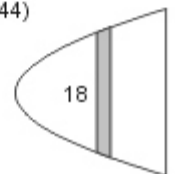


16

KE8+E5+E6+E7(E43+E42+E41+E44)



17

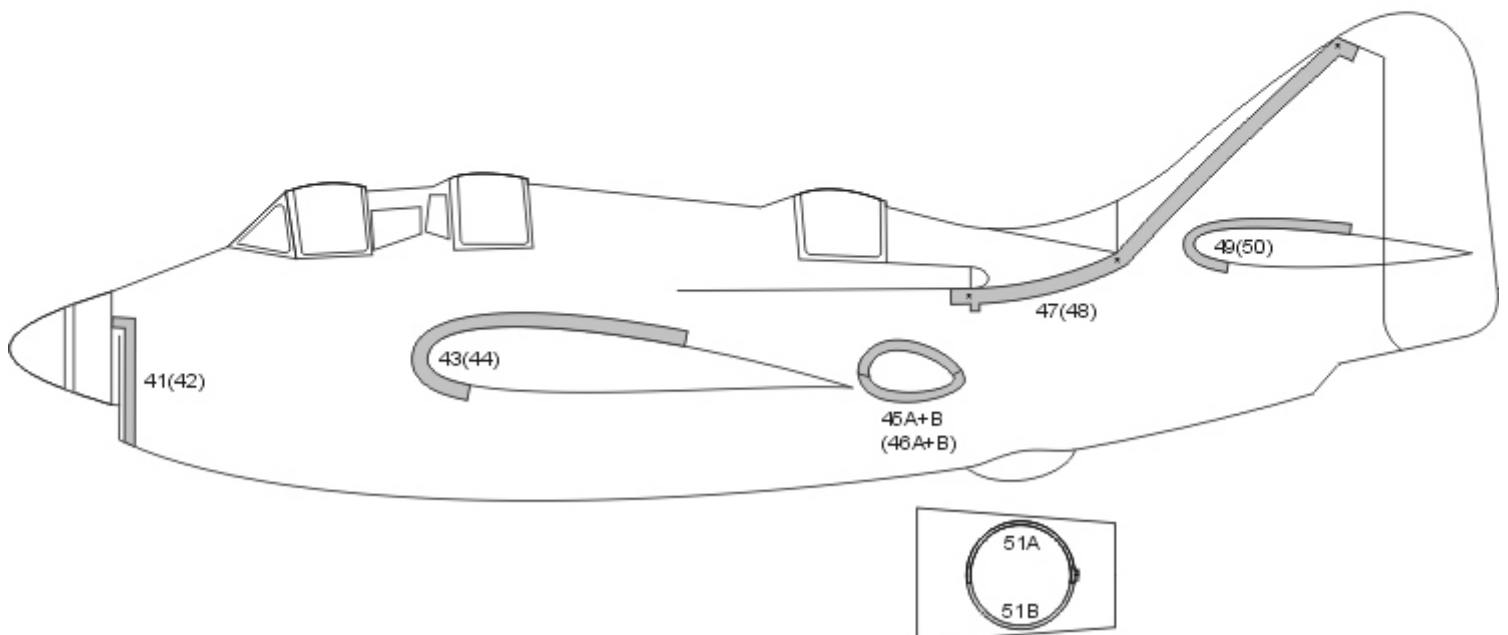


18



19A+B

19C+D





Mi-4AV Hound BASIC kabuki masks

for Trumpeter 05818 kit

<http://mek.kosmo.cz/newware>

tom.nwkits@seznam.cz

Important:

Let the sprayed color dry before applying masks. Remove masks very carefully after painting.

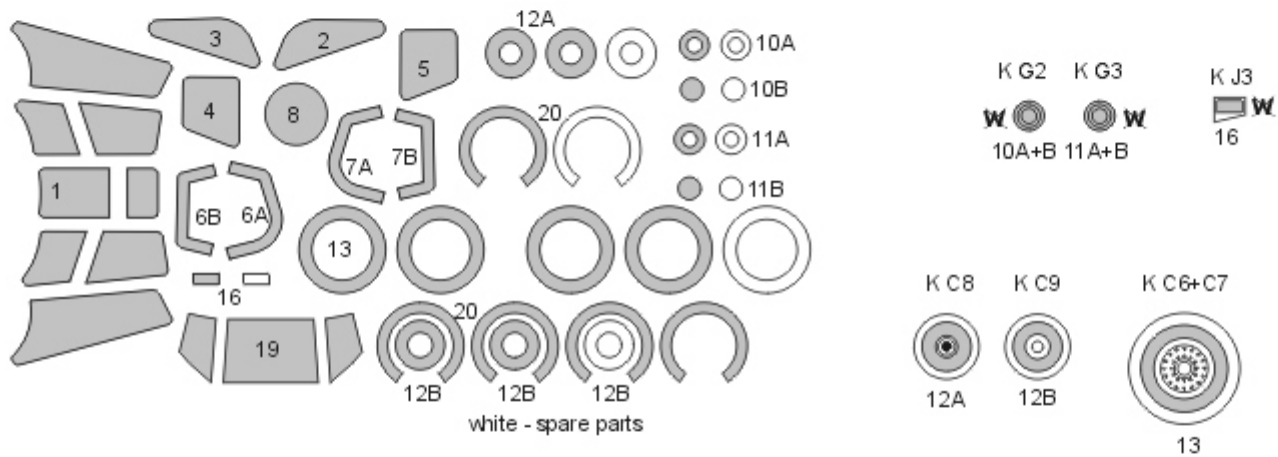
Where the mask is divided into A and B parts, first apply part A, next part B.

The set does not include masks for all areas, so mask the rest with masking tape or liquid mask.

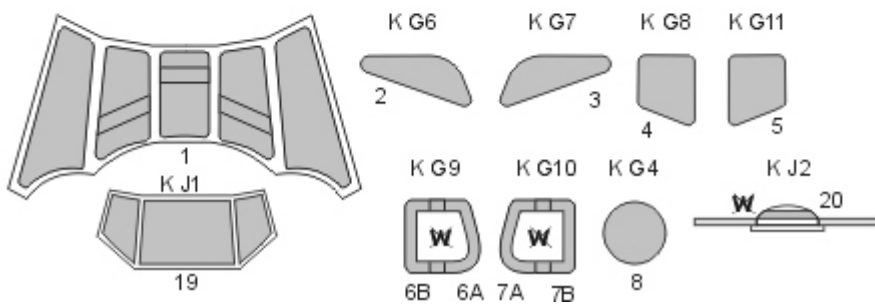
K kit part

^ start placing the mask from this point

Placing wet masks on wet surface is recommended, except those marked by **W**



white - spare parts



NWAM1170



Mi-4AV Hound EXPERT kabuki masks
for Trumpeter 05818 kit
<http://mek.kosmo.cz/newware>

INCLUDES ALSO
WINDOWS INNER SIDE
AND CAMOUFLAGE DETAILS MASKS

1/48 scale

tom.nwkits@seznam.cz

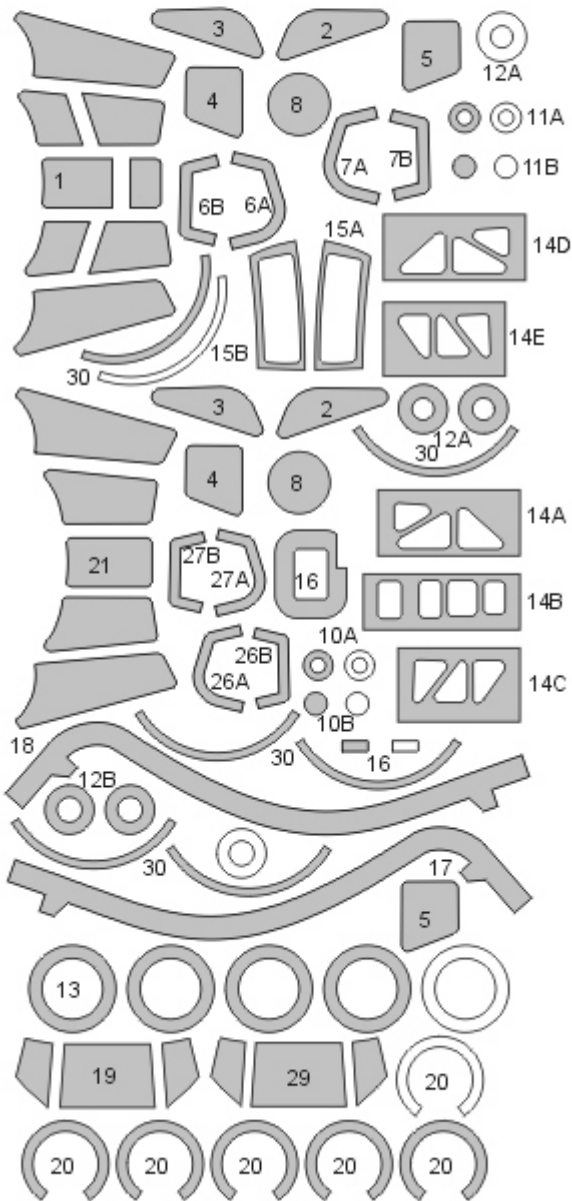
Important:

Let the sprayed color dry before applying masks. Remove masks very carefully after painting.
Where the mask is divided into A and B parts, first apply part A, next part B.
The set does not include masks for all areas, so mask the rest with masking tape or liquid mask.

K kit part

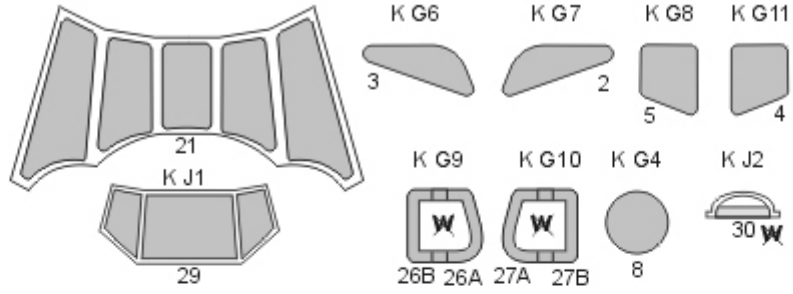
* start placing the mask from this point

Placing wet masks on wet surface is recommended, except those marked by **W**



white - spare parts

STEP 1 - exterior view
mask interior, paint interior color



STEP 2
mask exterior, paint camouflage color

