



NEW WARE NEWSLETTER

NEW MASKS JULY 2023

| | |
|---|--------------------------|
| NWAM1122 1/72 OV-10A Bronco BASIC kabuki masks | ICM |
| NWAM1123 1/72 OV-10A Bronco EXPERT kabuki masks | ICM |
| NWAM1124 1/48 PV-1 Ventura BASIC kabuki masks | Academy, Revell |
| NWAM1125 1/48 PV-1 Ventura EXPERT kabuki masks | Academy, Revell |
| NWAM1126 1/48 Focke-Wulf 1000 Fast-Bomber BASIC kabuki masks | Modelcollect Fist of War |
| NWAM1127 1/48 Focke-Wulf 1000 Fast-Bomber EXPERT kabuki masks | Modelcollect Fist of War |
| NWAM1128 1/48 A-10C BASIC kabuki masks | Academy |
| NWAM1129 1/48 A-10C EXPERT kabuki masks | Academy |



OV-10A Bronco BASIC kabuki masks

for ICM72185 kit

<http://mek.kosmo.cz/newware>

tom.nwkits@seznam.cz

Important:

Let the sprayed color dry before applying masks. Remove masks very carefully after painting.

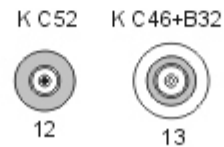
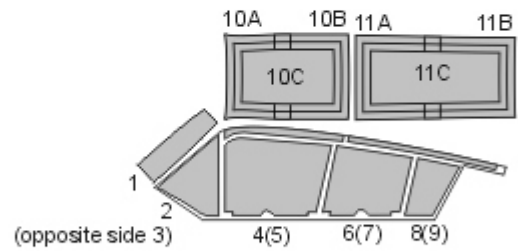
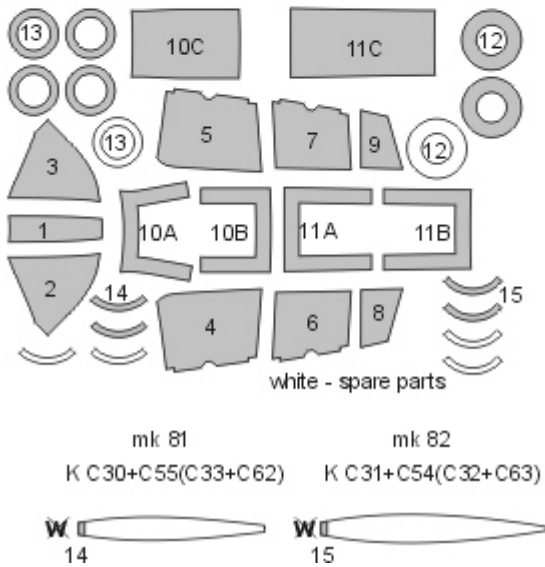
Where the mask is divided into A and B parts, first apply part A, next part B.

The set does not include masks for all areas, so mask the rest with masking tape or liquid mask.

K kit part

* start placing the mask from this point

Placing wet masks on wet surface is recommended, except those marked by **W**





NWAM1123

OV-10A Bronco EXPERT kabuki masks

for ICM 72185 kit

<http://mek.kosmo.cz/newware>

INCLUDES ALSO WINDOWS
INNER SIDE AND BOMBS MASKS

1/72 scale

tom.nwkits@seznam.cz

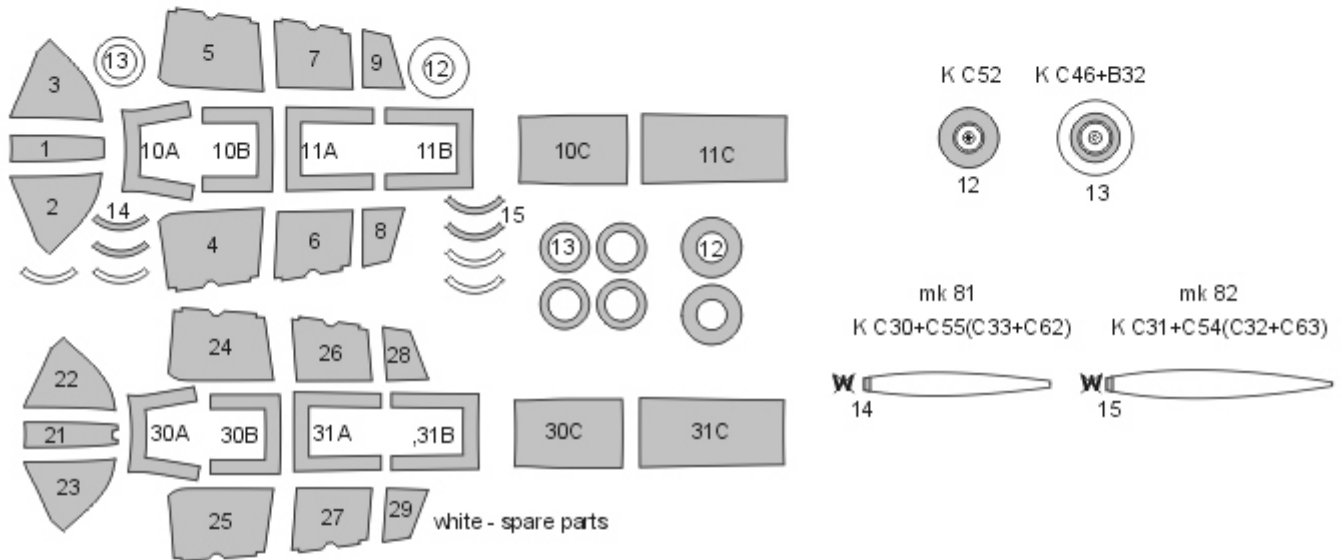
Important:

Let the sprayed color dry before applying masks. Remove masks very carefully after painting.
Where the mask is divided into A and B parts, first apply part A, next part B.
The set does not include masks for all areas, so mask the rest with masking tape or liquid mask.

K kit part

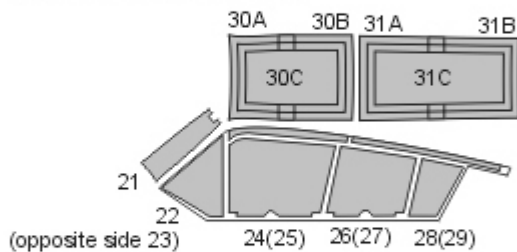
^ start placing the mask from this point

Placing wet masks on wet surface is recommended, except those marked by **W**



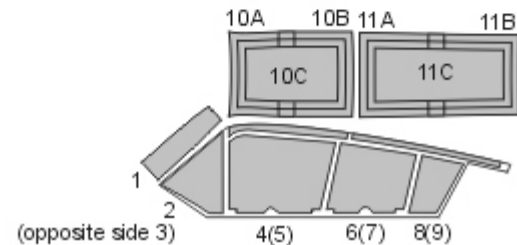
STEP 1 - exterior view

mask interior, paint interior color



STEP 2

mask exterior, paint camouflage color





PV-1 Ventura BASIC kabuki masks

for Academy 12347 and Revell 85-5531, 04662 kits

<http://mek.kosmo.cz/newware>

tom.nwkits@seznam.cz

Important:

Let the sprayed color dry before applying masks. Remove masks very carefully after painting.

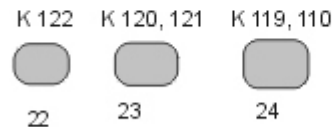
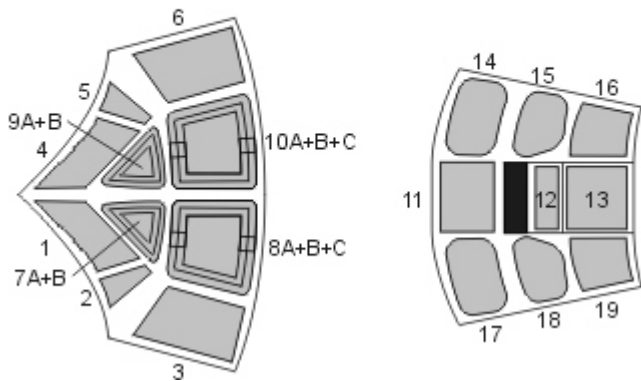
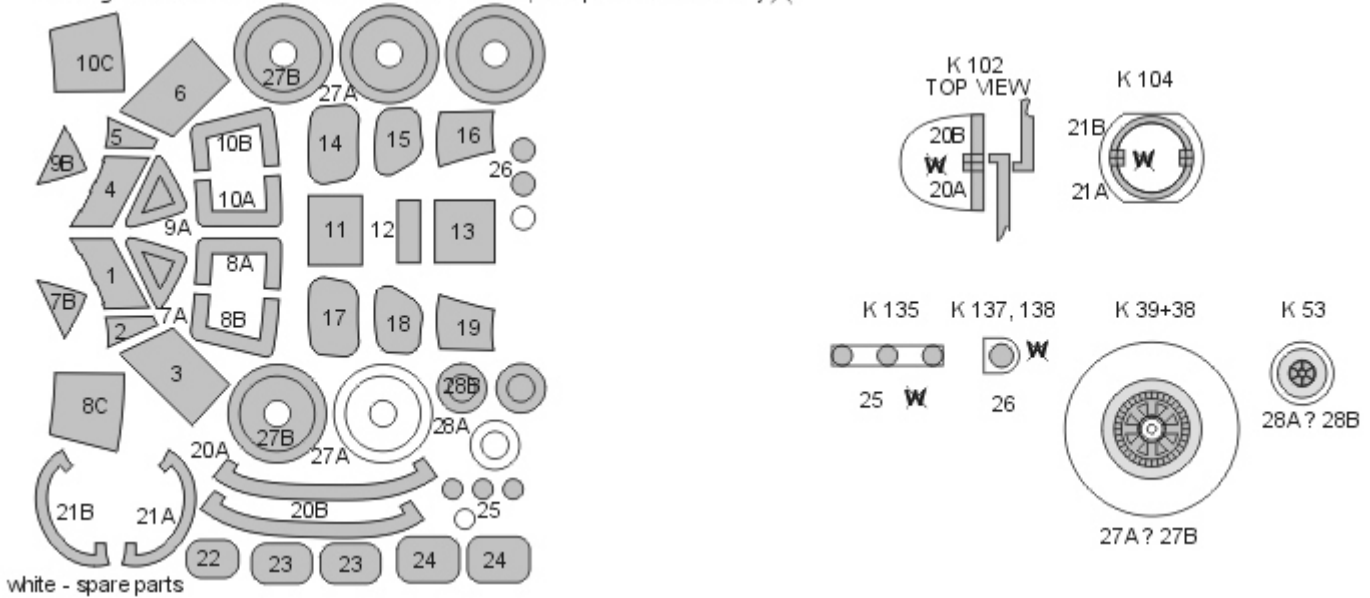
Where the mask is divided into A and B parts, first apply part A, next part B.

The set does not include masks for all areas, so mask the rest with masking tape or liquid mask.

K kit part

^ start placing the mask from this point

Placing wet masks on wet surface is recommended, except those marked by **W**



NWAM1125

1/48 scale



PV-1 Ventura EXPERT kabuki masks
for Academy 12347 and Revell 85-5531, 04662 kits
<http://mek.kosmo.cz/newware>

INCLUDES ALSO WINDOWS
INNER SIDE MASKS

tom.nwkits@seznam.cz

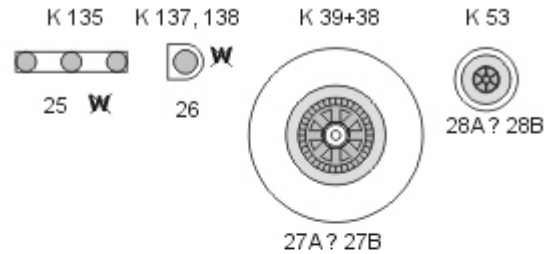
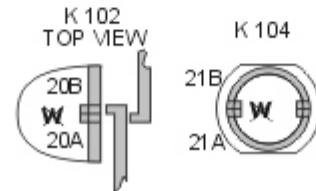
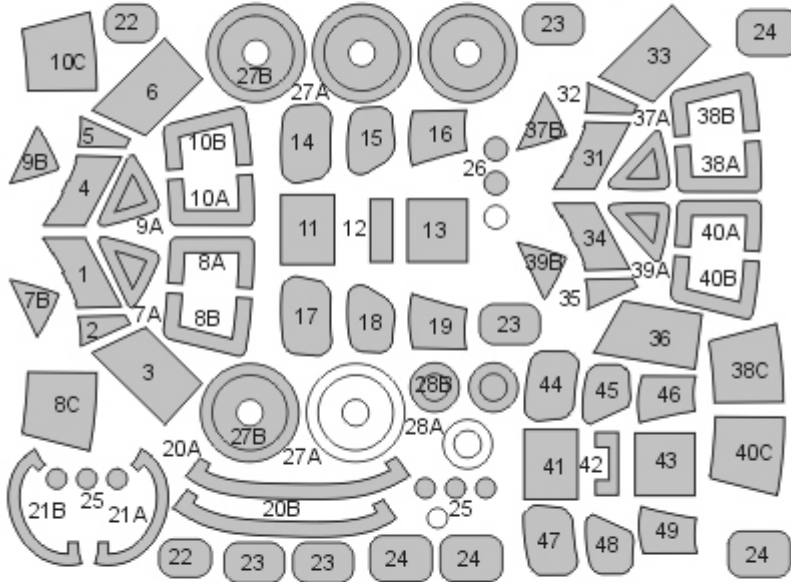
Important:

Let the sprayed color dry before applying masks. Remove masks very carefully after painting.
Where the mask is divided into A and B parts, first apply part A, next part B.
The set does not include masks for all areas, so mask the rest with masking tape or liquid mask.

K kit part

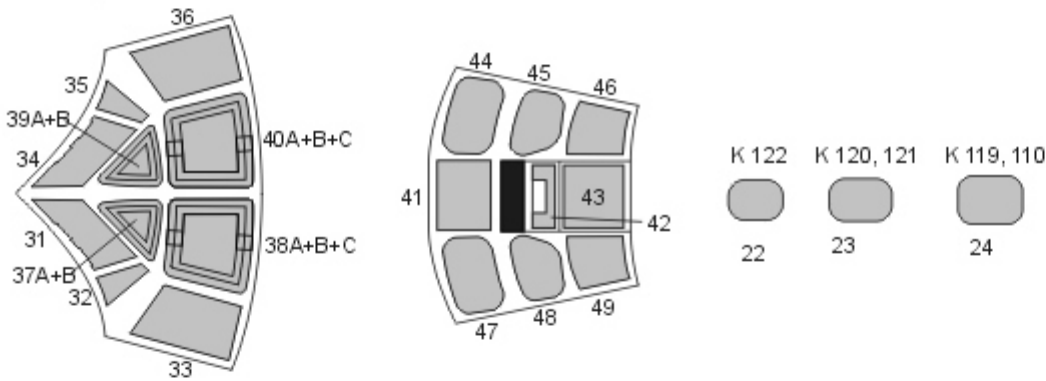
* start placing the mask from this point

Placing wet masks on wet surface is recommended, except those marked by **W**

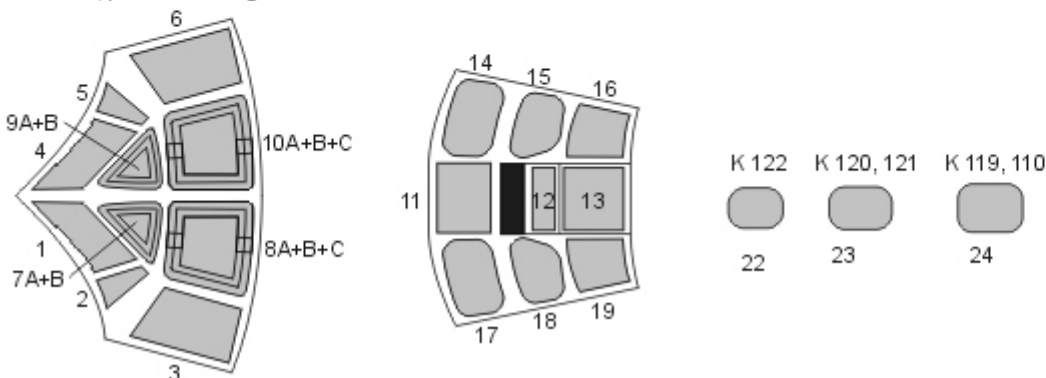


white - spare parts

STEP 1 - exterior view
mask interior, paint interior color



STEP 2 - exterior view
mask exterior, paint camouflage color





Focke-Wulf 1000 Fast-Bomber BASIC kabuki masks
 for Modelcollect Fist of War UA 48002 and UA 48010 kits
<http://mek.kosmo.cz/newware>

tom.nwkits@seznam.cz

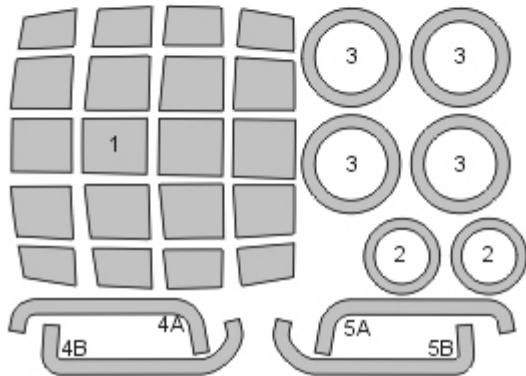
Important:

Let the sprayed color dry before applying masks. Remove masks very carefully after painting.
 Where the mask is divided into A and B parts, first apply part A, next part B.
 The set does not include masks for all areas, so mask the rest with masking tape or liquid mask.

K kit part

^ start placing the mask from this point

Placing wet masks on wet surface is recommended, except those marked by **W**

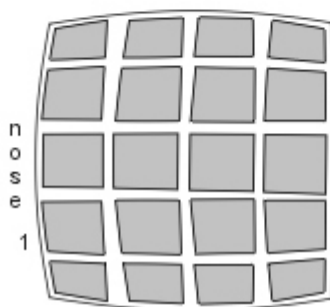


K B05+B06 K B1+B3, B2+B4



K B 13+B20

K B 14+B19





Focke-Wulf 1000 Fast-Bomber EXPERT kabuki masks
 for Modelcollect Fist of War UA 48002 and UA 48010 kits
<http://mek.kosmo.cz/newware>

INCLUDES ALSO WINDOWS
 INNER SIDE MASKS

tom.nwkits@seznam.cz

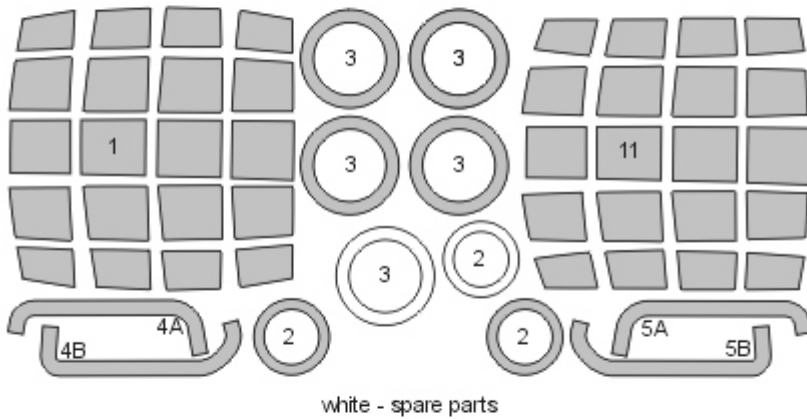
Important:

Let the sprayed color dry before applying masks. Remove masks very carefully after painting.
 Where the mask is divided into A and B parts, first apply part A, next part B.
 The set does not include masks for all areas, so mask the rest with masking tape or liquid mask.

K kit part

^ start placing the mask from this point

Placing wet masks on wet surface is recommended, except those marked by **W**



K B05+B06 K B1+B3, B2+B4

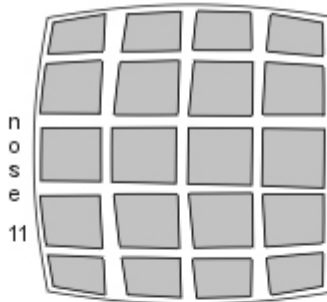


K B 13+B20

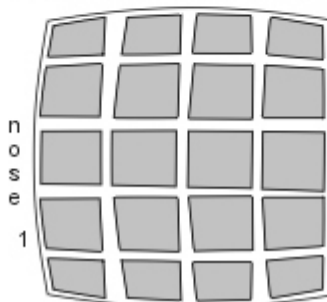
K B 14+B19



STEP 1
 mask interior, paint interior color



STEP 2
 mask exterior, paint camouflage color





A-10C BASIC kabuki masks

for Academy 12348 kit

<http://mek.kosmo.cz/newware>

tom.nwkits@seznam.cz

Important:

Let the sprayed color dry before applying masks. Remove masks very carefully after painting.

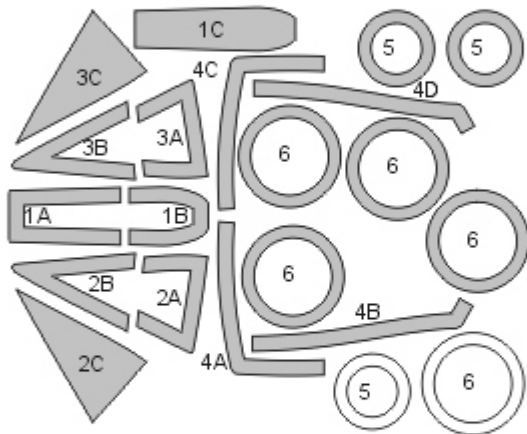
Where the mask is divided into A and B parts, first apply part A, next part B.

The set does not include masks for all areas, so mask the rest with masking tape or liquid mask.

K kit part

* start placing the mask from this point

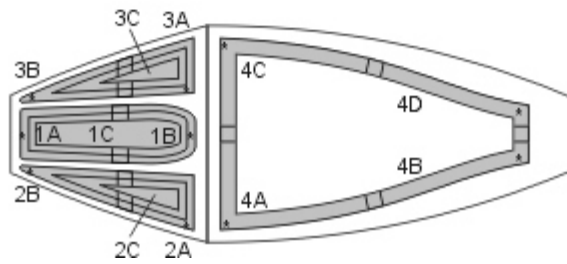
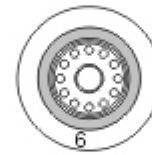
Placing wet masks on wet surface is recommended, except those marked by **W**



white - spare parts

K A50+A51

K D37+A52



Important:

Let the sprayed color dry before applying masks. Remove masks very carefully after painting.

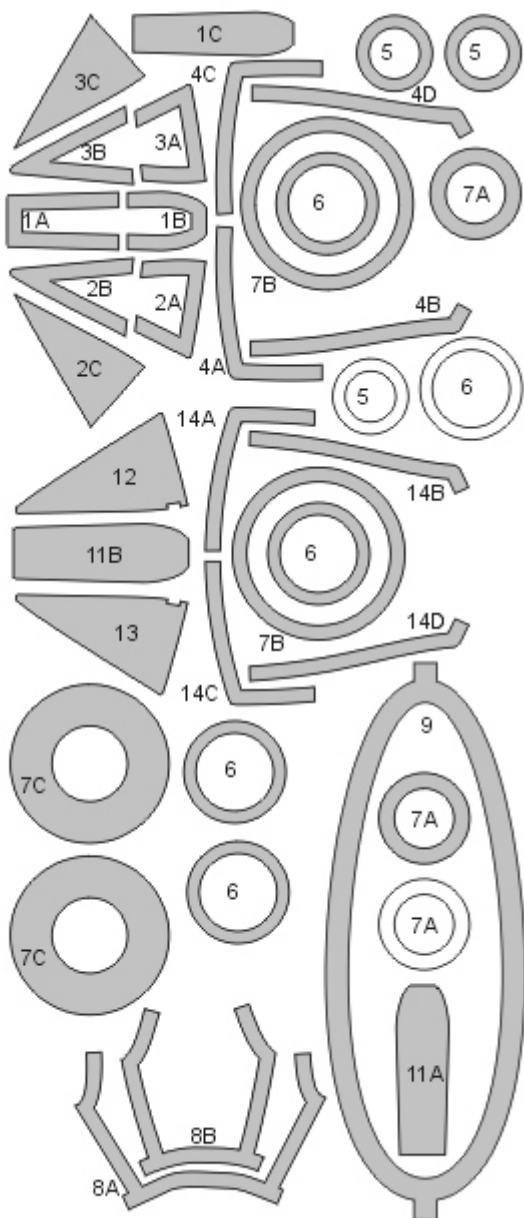
Where the mask is divided into A and B parts, first apply part A, next part B.

The set does not include masks for all areas, so mask the rest with masking tape or liquid mask.

K kit part

* start placing the mask from this point

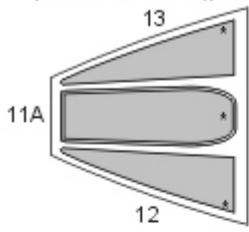
Placing wet masks on wet surface is recommended, except those marked by **W**



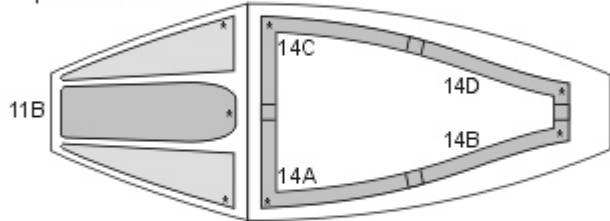
white - spare parts

STEP 1 - exterior view
mask interior

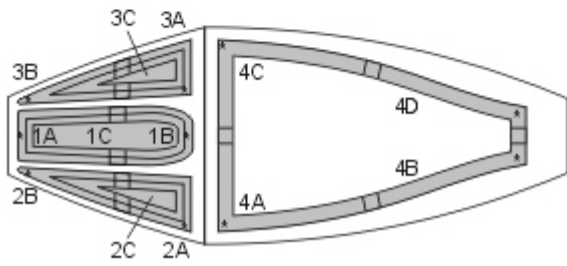
paint frame color (yellow or red)



paint interior color

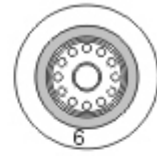


STEP 2
mask exterior, paint camouflage color



K A50+A51

K D37+A52



K D38

