



NEW WARE NEWSLETTER

NEW MASKS MAY 2023

NWAM1097 1/48 F-4E and F-4G Phantom II ADVANCED kabuki masks	Meng
NWAM1098 1/48 F-4E and F-4G Phantom II EXPERT kabuki masks	Meng
NWAM1099 1/48 F-4E and F-4G Phantom II EXHAUST NOZZLES kabuki masks	Meng
NWAM1100 1/48 F-22A Raptor BASIC kabuki masks	I Love Kit
NWAM1101 1/48 F-22A Raptor EXPERT kabuki masks	I Love Kit
NWAM1102 1/48 Harrier AV-8A, GR1/GR3 BASIC kabuki masks	Kinetic
NWAM1103 1/48 Harrier AV-8A, GR1/GR3 ADVANCED kabuki masks	Kinetic
NWAM1104 1/48 Harrier AV-8A, GR1/GR3 EXPERT kabuki masks	Kinetic
NWAM 1105 1/48 Mi-4A Hound BASIC kabuki masks	Trumpeter
NWAM 1106 1/48 Mi-4A Hound EXPERT kabuki masks	Trumpeter



F-4E and F-4G Phantom II ADVANCED kabuki masks

for Meng LS-015 and LS-017 kits

<http://mek.kosmo.cz/newware>

INCLUDES ALSO WINDOWS
SEAL MASKS

tom.nwkits@seznam.cz

USE ALSO NWAM1099 F-4E AND F-4G EXHAUST NOZZLES KABUKI MASKS

Important:

Let the sprayed color dry before applying masks. Remove masks very carefully after painting.

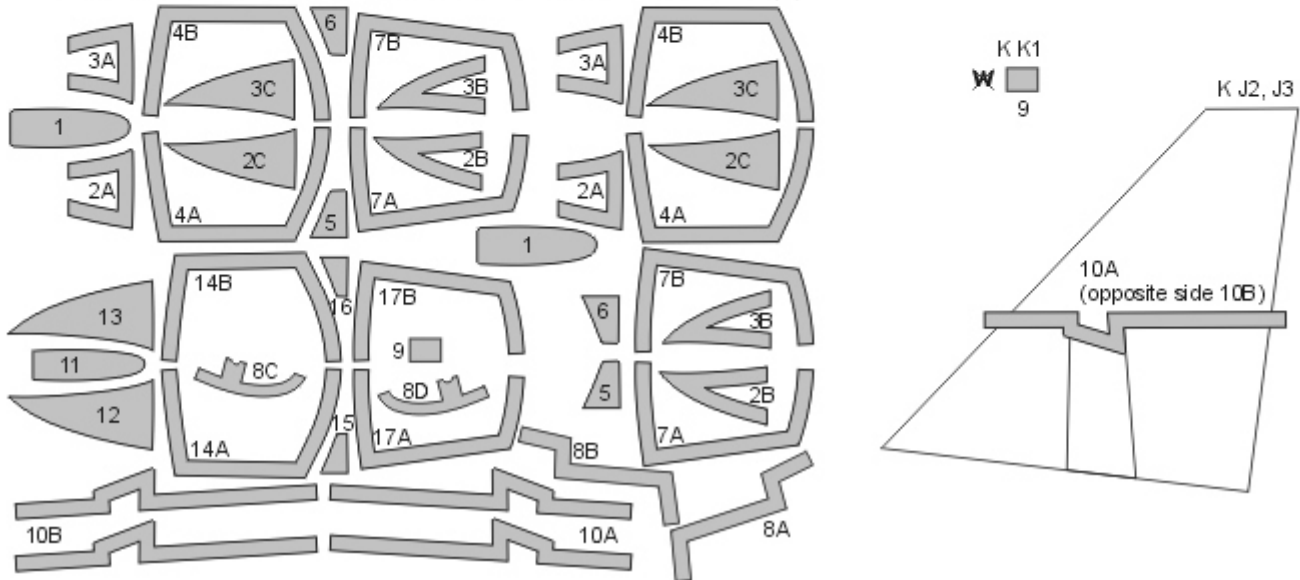
Where the mask is divided into A and B parts, first apply part A, next part B.

The set does not include masks for all areas, so mask the rest with masking tape or liquid mask.

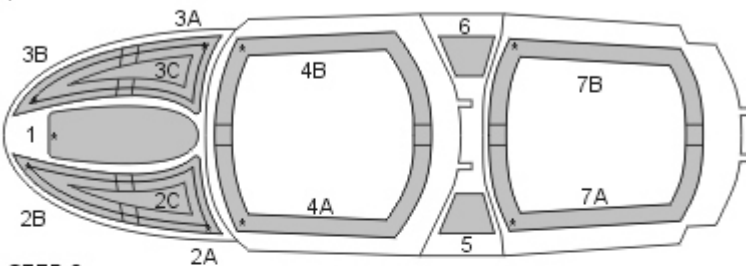
K kit part

* start placing the mask from this point

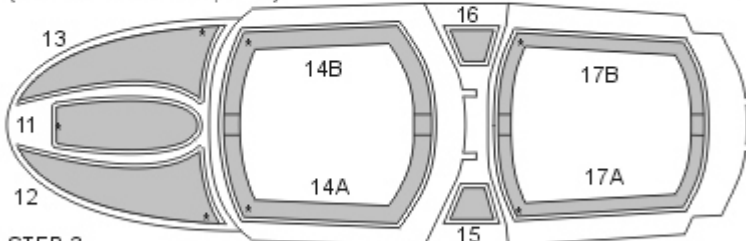
Placing wet masks on wet surface is recommended, except those marked by **W**



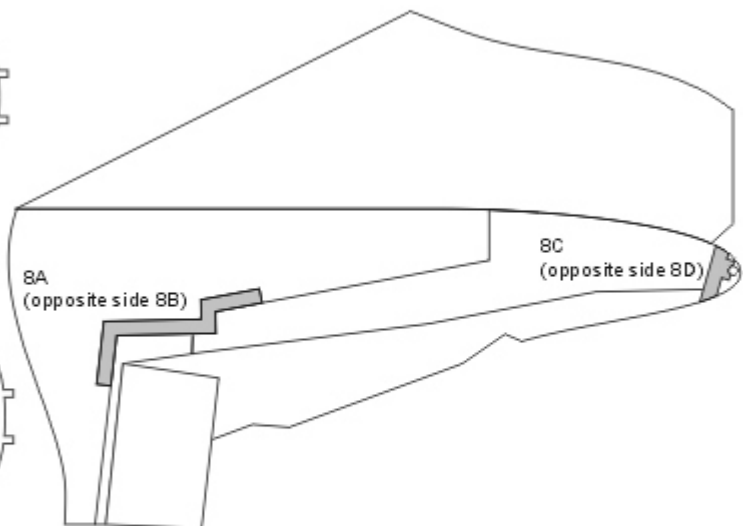
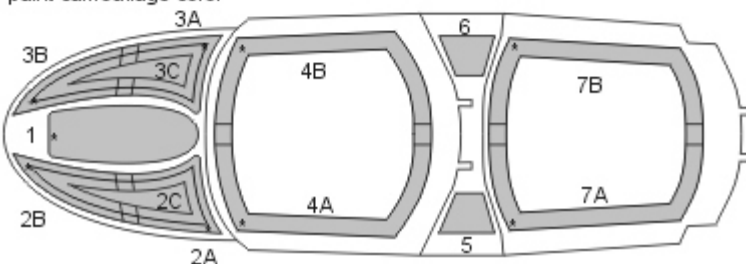
STEP 1
paint interior color



STEP 2
paint window seal color
(thickness of seal is 0,5 mm)



STEP 3
paint camouflage color



NWAM1098

1/48 scale



F-4E and F-4G Phantom II EXPERT kabuki masks

for Meng LS-015 and LS-017 kits

<http://mek.kosmo.cz/newware>

INCLUDES ALSO WINDOWS
SEAL AND INNER SIDE MASKS

tom.nwkits@seznam.cz

USE ALSO NWAM1099 F-4E AND F-4G EXHAUST NOZZLES KABUKI MASKS

Important:

Let the sprayed color dry before applying masks. Remove masks very carefully after painting.

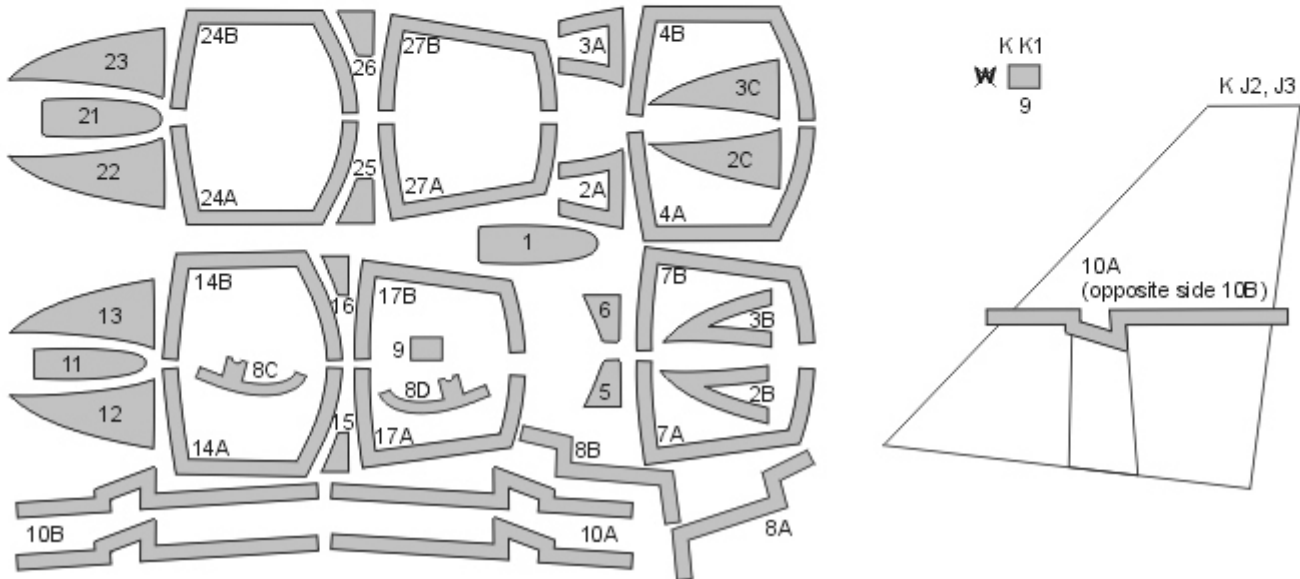
Where the mask is divided into A and B parts, first apply part A, next part B.

The set does not include masks for all areas, so mask the rest with masking tape or liquid mask.

K kit part

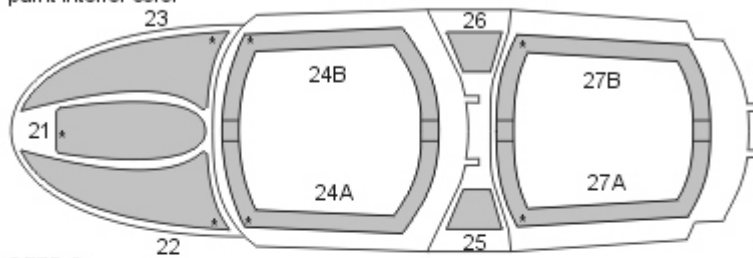
* start placing the mask from this point

Placing wet masks on wet surface is recommended, except those marked by **W**



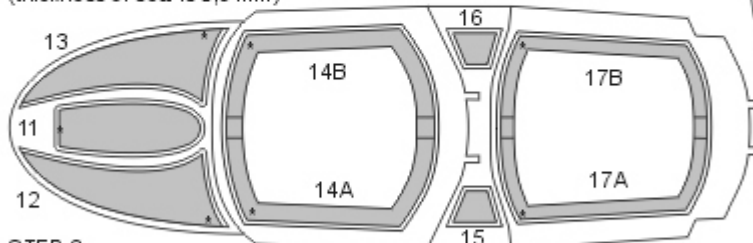
STEP 1 - exterior view

mask inner side
paint interior color



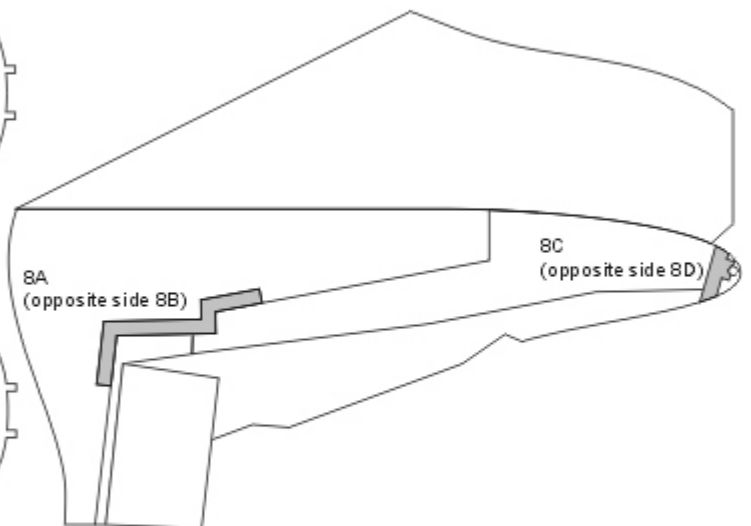
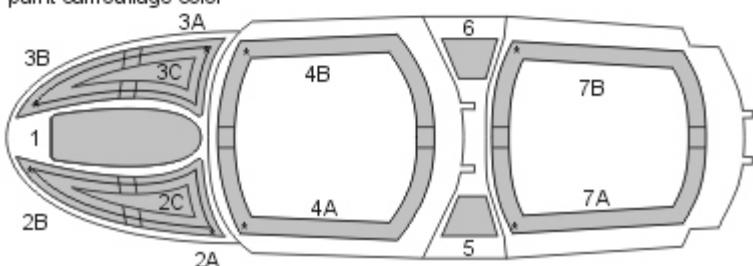
STEP 2

paint window seal color
(thickness of seal is 0,5 mm)



STEP 3

paint camouflage color



NWAM1099

1/48 scale



F-4E and F-4G Phantom II EXHAUST NOZZLES kabuki masks

for Meng LS-015 and LS-017 kits

<http://mek.kosmo.cz/newware>

tom.nwkits@seznam.cz

USE ALSO NWAM1097 OR NWAM1098 F-4E AND F-4G KABUKI MASKS

Important:

Let the sprayed color dry before applying masks. Remove masks very carefully after painting.

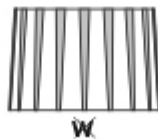
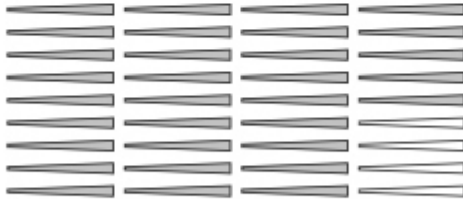
Where the mask is divided into A and B parts, first apply part A, next part B.

The set does not include masks for all areas, so mask the rest with masking tape or liquid mask.

K kit part

* start placing the mask from this point

Placing wet masks on wet surface is recommended, except those marked by **W**



NWAM1100

1/48 scale



F-22A Raptor BASIC kabuki masks

for I Love Kit 62801 kit

<http://mek.kosmo.cz/newware>

tom.nwkits@seznam.cz

Important:

Let the sprayed color dry before applying masks. Remove masks very carefully after painting.

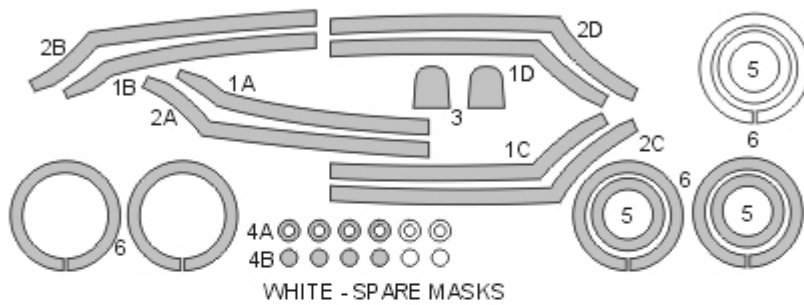
Where the mask is divided into A and B parts, first apply part A, next part B.

The set does not include masks for all areas, so mask the rest with masking tape or liquid mask.

K kit part

* start placing the mask from this point

Placing wet masks on wet surface is recommended, except those marked by **W**



K H1



3
both sides

K H4 - H7

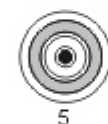


4A



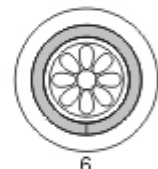
4B

K G12+G13



5

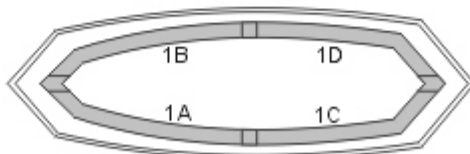
K B8+B20



6

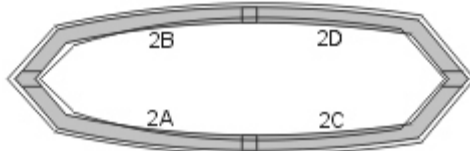
STEP 1

mask exterior, paint frame color



STEP 2

mask exterior, paint camouflage color





NWAM1101

F-22A Raptor EXPERT kabuki masks

for I Love Kit 62801 kit

<http://mek.kosmo.cz/newware>

INCLUDES ALSO WINDOWS
INNER SIDE, EXHAUST NOZZLES
AND CAMOUFLAGE DETAILS MASKS

1/48 scale

tom.nwkits@seznam.cz

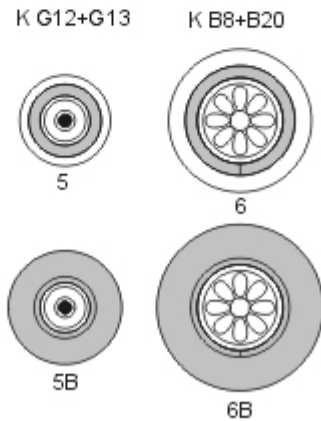
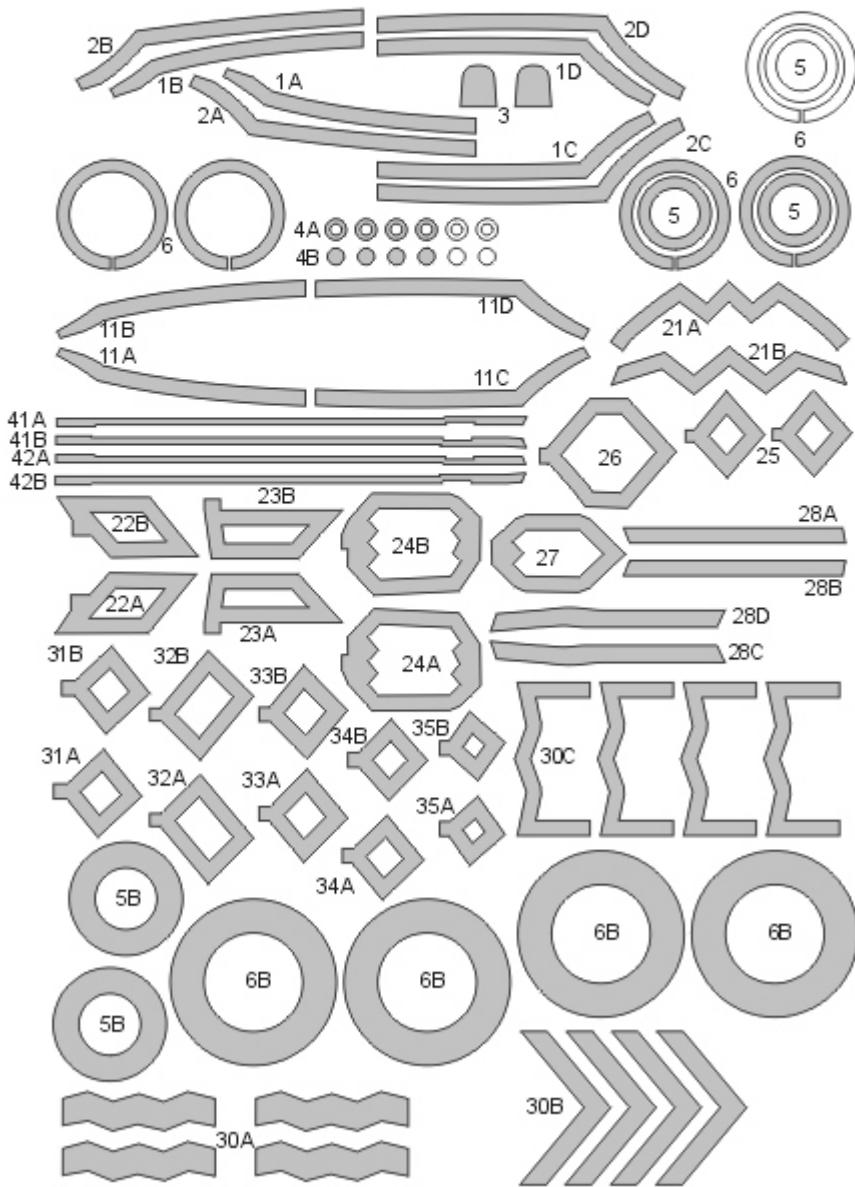
Important:

Let the sprayed color dry before applying masks. Remove masks very carefully after painting.
Where the mask is divided into A and B parts, first apply part A, next part B.
The set does not include masks for all areas, so mask the rest with masking tape or liquid mask.

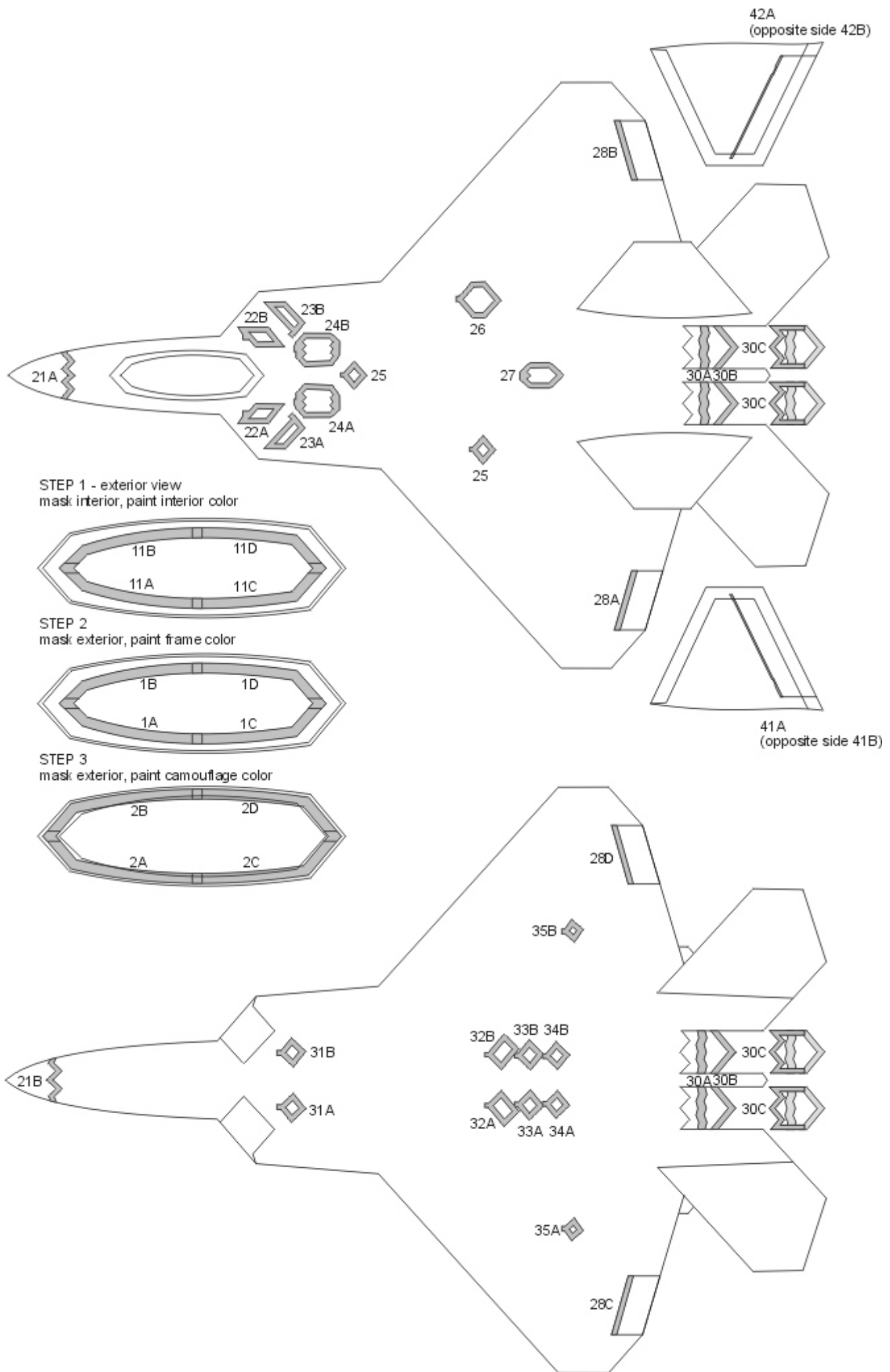
K kit part

* start placing the mask from this point

Placing wet masks on wet surface is recommended, except those marked by **W**



WHITE - SPARE MASKS





Harrier AV-8A, GR1/GR3 BASIC kabuki masks
 for Kinetic K48072, K48060, K48139 and other kits
<http://mek.kosmo.cz/newware>

tom.nwkits@seznam.cz

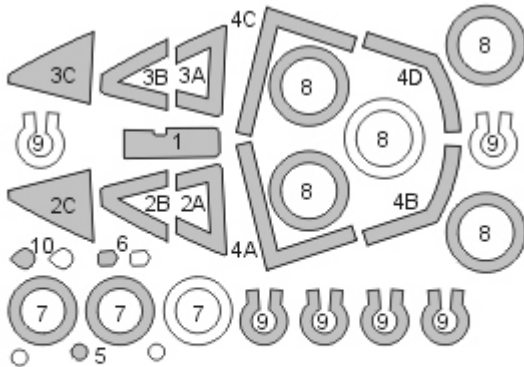
Important:

Let the sprayed color dry before applying masks. Remove masks very carefully after painting.
 Where the mask is divided into A and B parts, first apply part A, next part B.
 The set does not include masks for all areas, so mask the rest with masking tape or liquid mask.

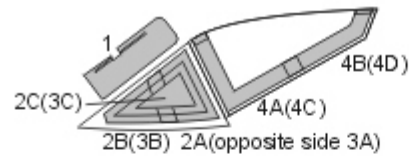
K kit part

^ start placing the mask from this point

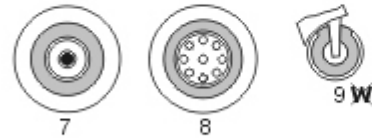
Placing wet masks on wet surface is recommended, except those marked by **W**



WHITE - SPARE MASKS



K D22+D25 K D24+D25 K E28



K Q5 K Q15 K Q16



NWAM1103



Harrier AV-8A, GR1/GR3 ADVANCED kabuki masks
for Kinetic K48072, K48060, K48139 and other kits
<http://mek.kosmo.cz/newware>

INCLUDES ALSO WINDOWS
SEAL MASKS

1/48 scale

tom.nwkits@seznam.cz

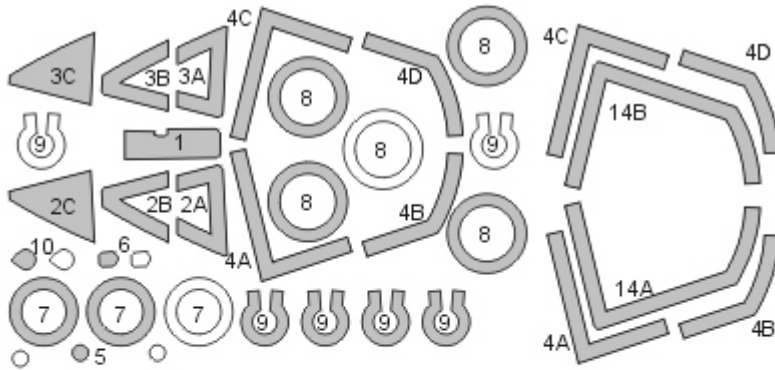
Important:

Let the sprayed color dry before applying masks. Remove masks very carefully after painting.
Where the mask is divided into A and B parts, first apply part A, next part B.
The set does not include masks for all areas, so mask the rest with masking tape or liquid mask.

K kit part

^ start placing the mask from this point

Placing wet masks on wet surface is recommended, except those marked by **W**

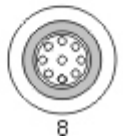
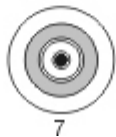


WHITE - SPARE MASKS

K D22+D25

K D24+D25

K E28

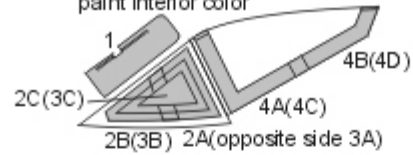


7

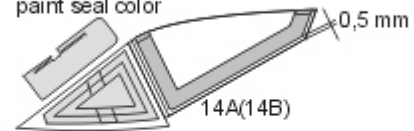
8

9 **W**

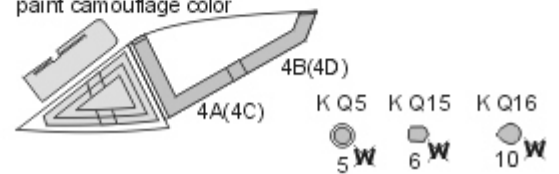
STEP 1
paint interior color



STEP 2
paint seal color



STEP 3
paint camouflage color



K Q5

K Q15

K Q16

5 **W**

6 **W**

10 **W**

NWAM1104



Harrier AV-8A, GR1/GR3 EXPERT kabuki masks
for Kinetic K48072, K48060, K48139 and other kits
<http://mek.kosmo.cz/newware>

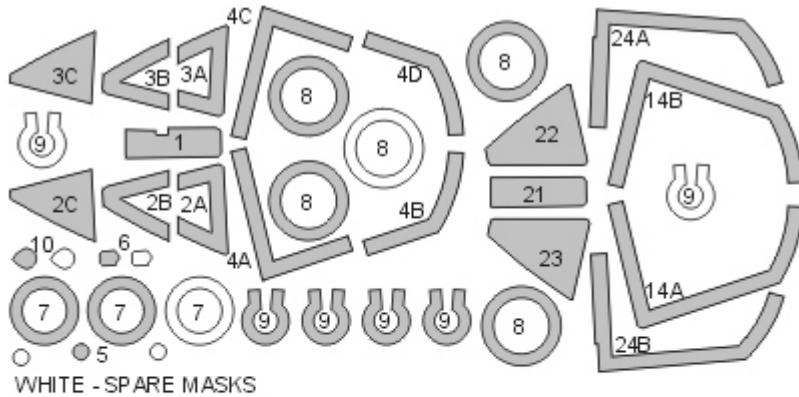
INCLUDES ALSO WINDOWS
SEAL AND INNER SIDE MASKS

1/48 scale

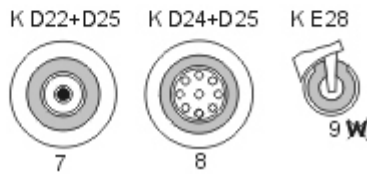
tom.nwkits@seznam.cz

Important:

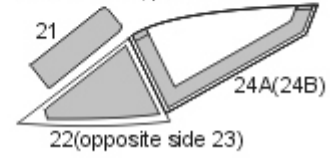
Let the sprayed color dry before applying masks. Remove masks very carefully after painting.
Where the mask is divided into A and B parts, first apply part A, next part B.
The set does not include masks for all areas, so mask the rest with masking tape or liquid mask.
K kit part
^ start placing the mask from this point
Placing wet masks on wet surface is recommended, except those marked by **W**



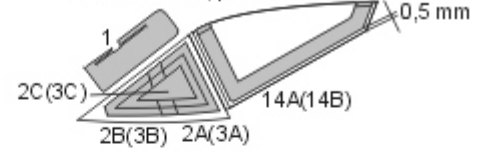
WHITE - SPARE MASKS



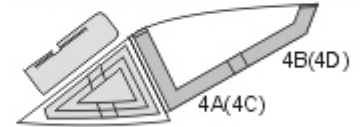
STEP 1 (exterior view)
mask interior, paint interior color



STEP 2
mask exterior, paint seal color



STEP 3
mask exterior, paint camouflage color





Mi-4A Hound BASIC kabuki masks

for Trumpeter 05817 kit

<http://mek.kosmo.cz/newware>

tom.nwkits@seznam.cz

Important:

Let the sprayed color dry before applying masks. Remove masks very carefully after painting.

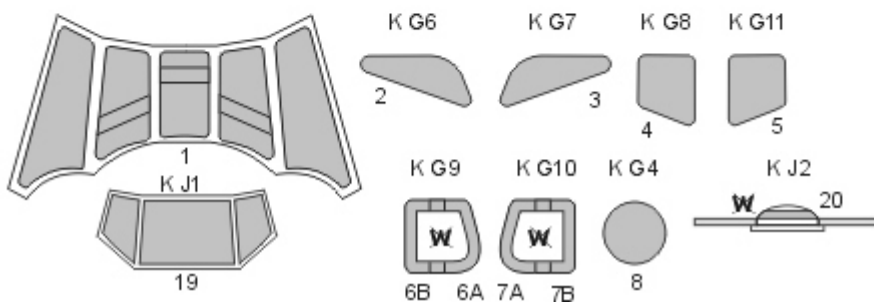
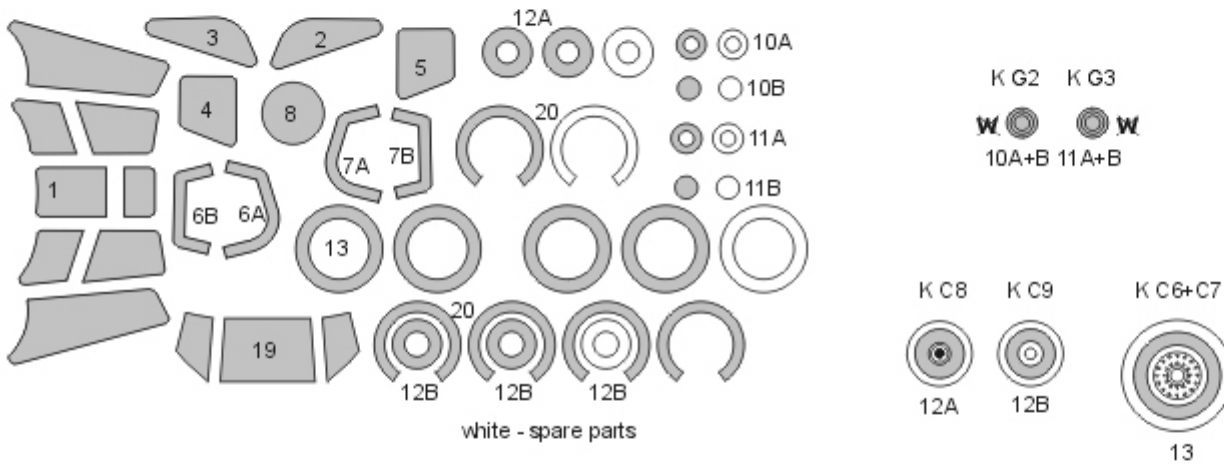
Where the mask is divided into A and B parts, first apply part A, next part B.

The set does not include masks for all areas, so mask the rest with masking tape or liquid mask.

K kit part

* start placing the mask from this point

Placing wet masks on wet surface is recommended, except those marked by **W**



NWAM1106



Mi-4A Hound EXPERT kabuki masks
for Trumpeter 05817 kit
<http://mek.kosmo.cz/newware>

INCLUDES ALSO
WINDOWS INNER SIDE
AND CAMOUFLAGE DETAILS MASKS

1/48 scale

tom.nwkits@seznam.cz

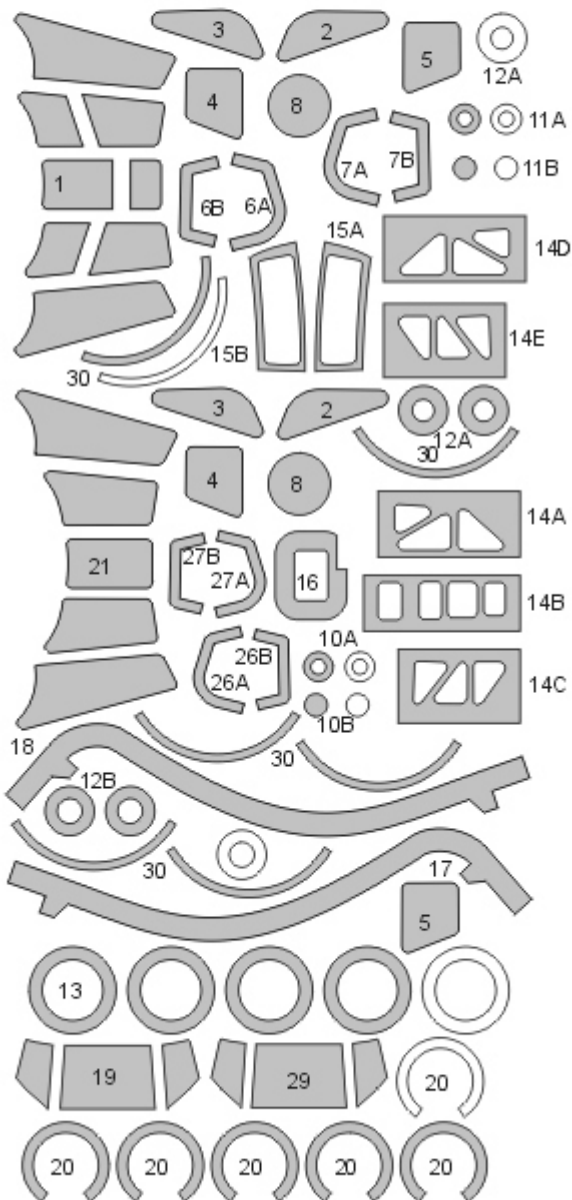
Important:

Let the sprayed color dry before applying masks. Remove masks very carefully after painting.
Where the mask is divided into A and B parts, first apply part A, next part B.
The set does not include masks for all areas, so mask the rest with masking tape or liquid mask.

K kit part

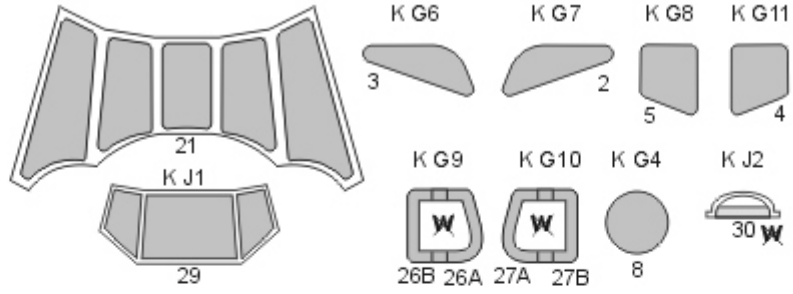
* start placing the mask from this point

Placing wet masks on wet surface is recommended, except those marked by **W**

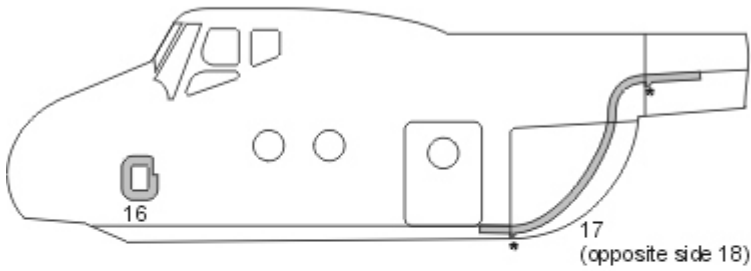
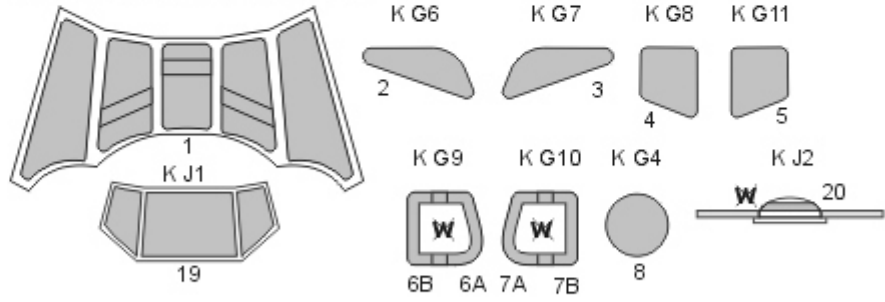


white - spare parts

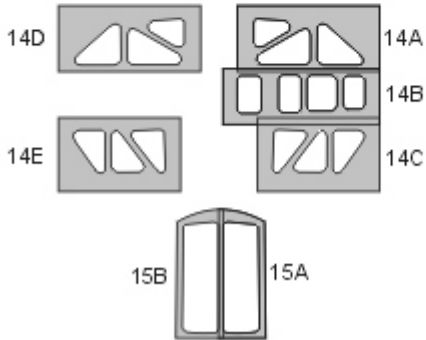
STEP 1 - exterior view
mask interior, paint interior color



STEP 2
mask exterior, paint camouflage color



K G2 K G3
W W
10A+B 11A+B



K C8 K C9 K C6+C7
12A 12B 13