



# NEW WARE NEWSLETTER

## NEW MASKS APRIL 2023

NWAM 1089 1/48 Su-17UM3 Fit ter-G BASIC kabuki mas ks
NWAM 1090 1/48 Su-17UM3 Fit ter-G ADVANCED kabuki m asks
NWAM 1091 1/48 Su-17UM3 Fit ter-G EXPERT kabuki mas ks
NWAM 1092 1/48 Mi-8MT Hip-H BASIC kabuk i mask s
NWAM 1093 1/48 Mi-8MT Hip-H EXPERT kabuki mask s
NWAM 1094 1/48 F-18F, E A-18G CORRECTION OF MENG F AND J MAS KS
NWAM 1095 1/72 U-2C Dragon Lady BASIC kabuk i mask s
NWAM 1096 1/72 U-2C Dragon Lady EXPERT kabuki mask s



## Su-17UM3 Fitter-G BASIC kabuki masks

for Hobby Boss 81759 kit

<http://mek.kosmo.cz/newware>

tom.nwkits@seznam.cz

### Important:

Let the sprayed color dry before applying masks. Remove masks very carefully after painting.

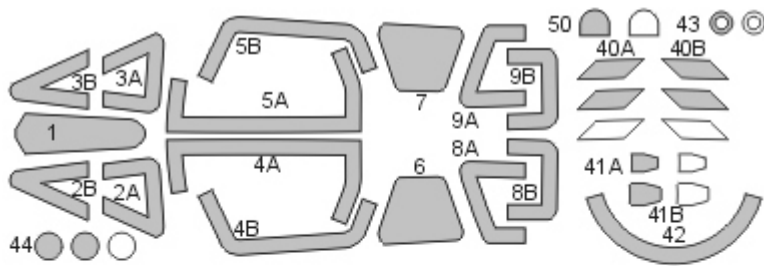
Where the mask is divided into A and B parts, first apply part A, next part B.

The set does not include masks for all areas, so mask the rest with masking tape or liquid mask.

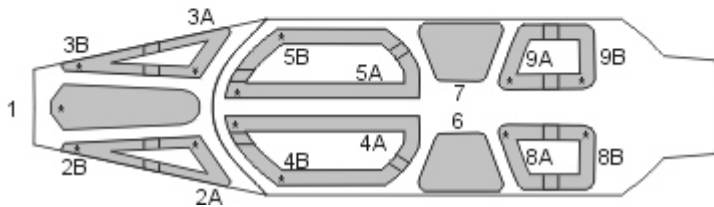
K kit part

^ start placing the mask from this point

Placing wet masks on wet surface is recommended, except those marked by **W**



WHITE - SPARE MASKS



# NWAM1090

1/48 scale



Su-17UM3 Fitter-G ADVANCED kabuki masks

for Hobby Boss 81759 kit

<http://mek.kosmo.cz/newware>

INCLUDES ALSO WINDOWS  
SEAL AND CAMOUFLAGE  
DETAILS MASKS

tom.nwkits@seznam.cz

### Important:

Let the sprayed color dry before applying masks. Remove masks very carefully after painting.

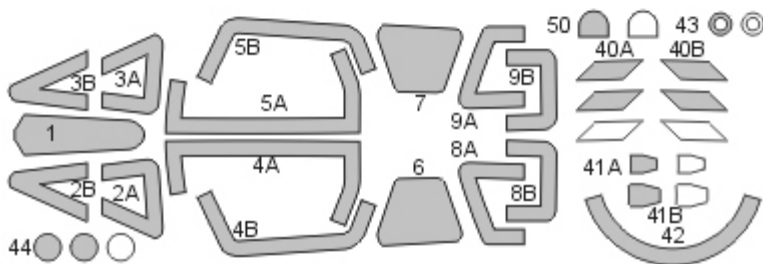
Where the mask is divided into A and B parts, first apply part A, next part B.

The set does not include masks for all areas, so mask the rest with masking tape or liquid mask.

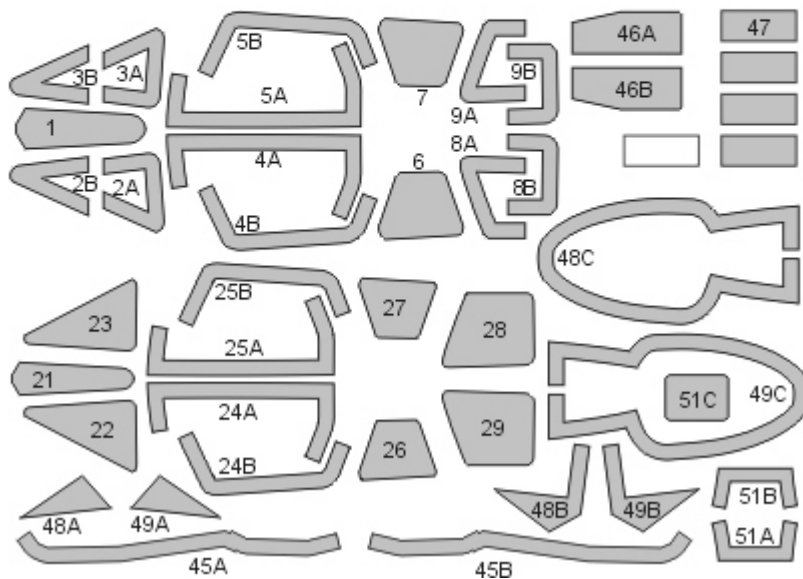
K kit part

\* start placing the mask from this point

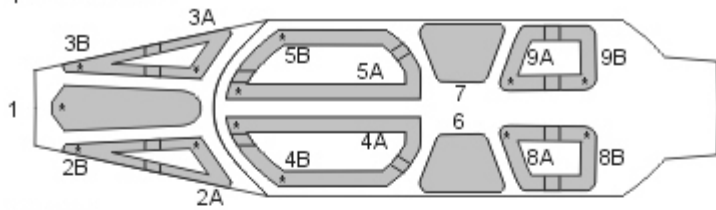
Placing wet masks on wet surface is recommended, except those marked by **W**



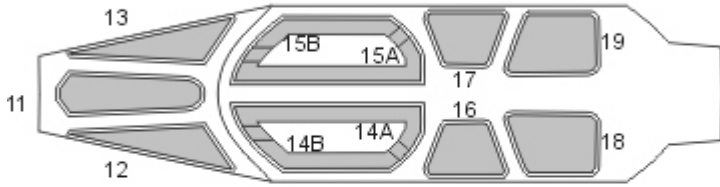
WHITE - SPARE MASKS



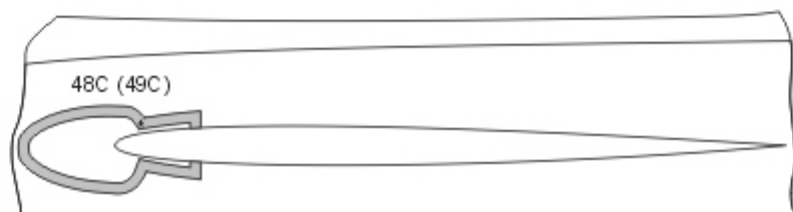
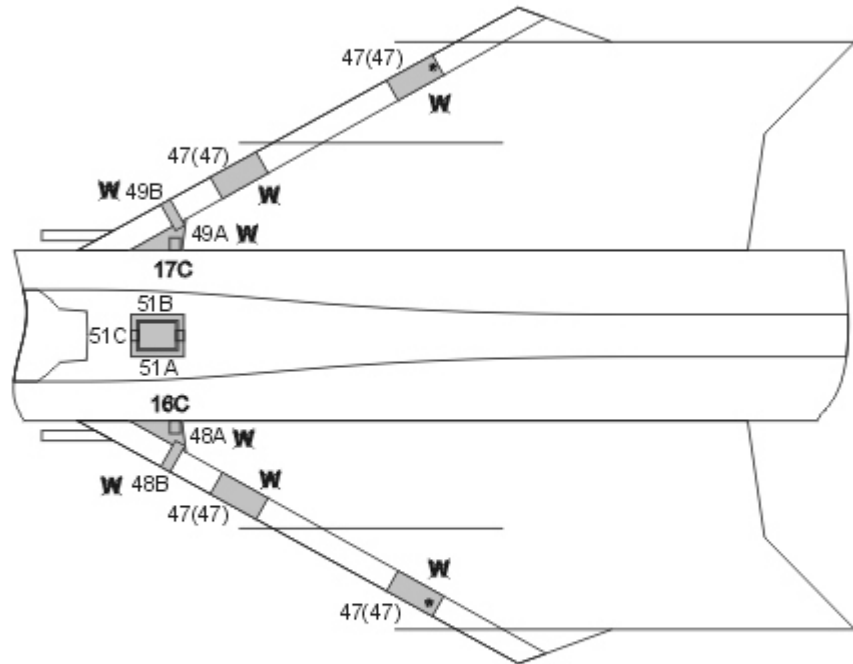
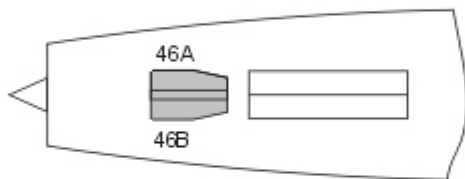
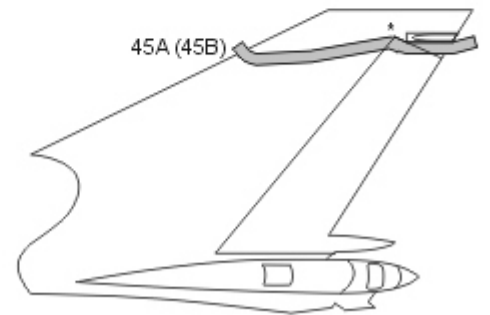
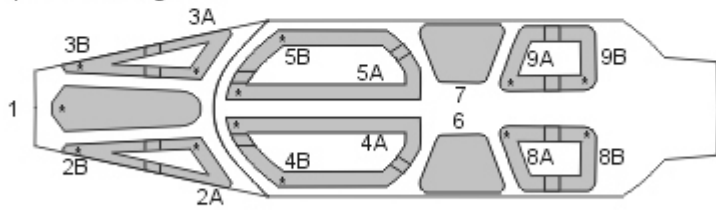
STEP 1  
paint interior color



STEP 2  
paint seal color (light grey) - seal thickness is 0,5 mm



STEP 3  
paint camouflage color



# NWAM1091



Su-17UM3 Fitter-G EXPERT kabuki masks

for Hobby Boss 81759 kit

<http://mek.kosmo.cz/newware>

INCLUDES ALSO WINDOWS  
SEAL, INNER SIDE  
AND CAMOUFLAGE DETAILS MASKS

1/48 scale

tom.nwkits@seznam.cz

### Important:

Let the sprayed color dry before applying masks. Remove masks very carefully after painting.

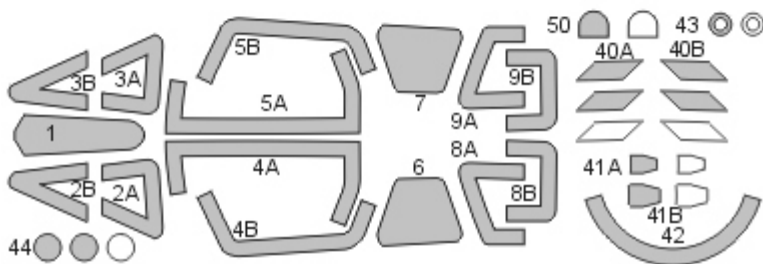
Where the mask is divided into A and B parts, first apply part A, next part B.

The set does not include masks for all areas, so mask the rest with masking tape or liquid mask.

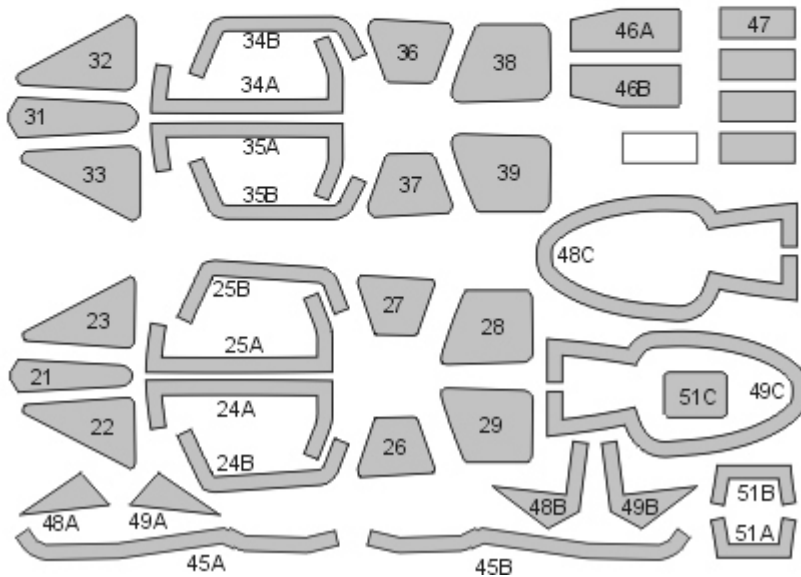
K kit part

\* start placing the mask from this point

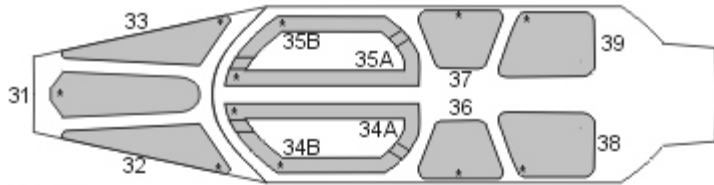
Placing wet masks on wet surface is recommended, except those marked by **W**



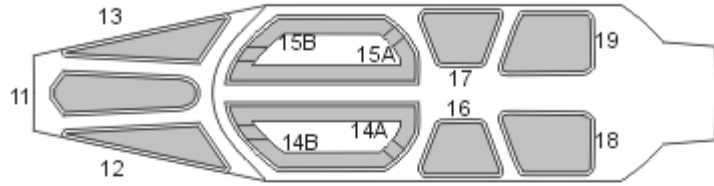
WHITE - SPARE MASKS



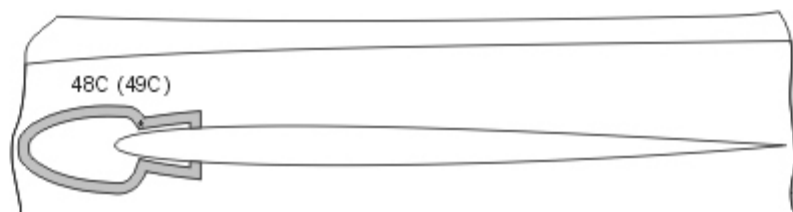
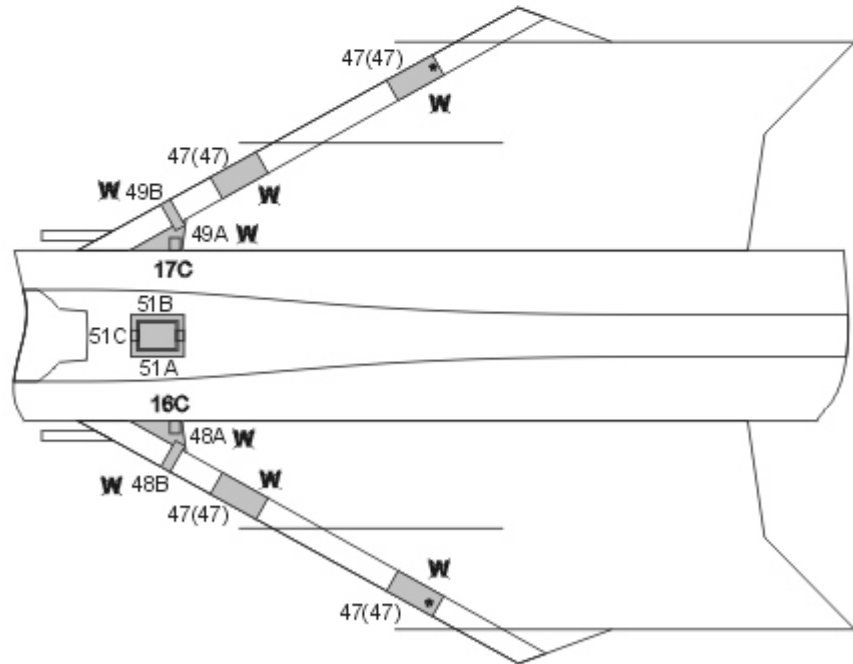
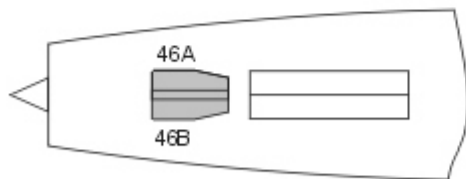
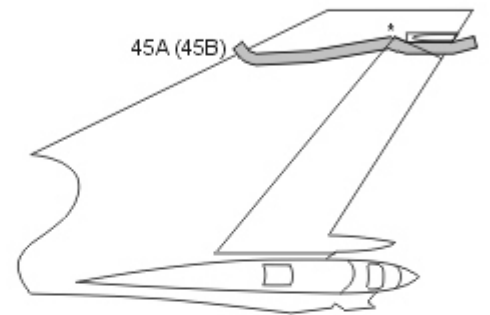
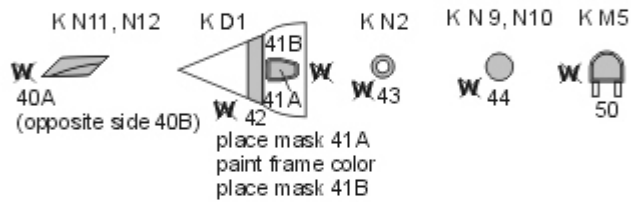
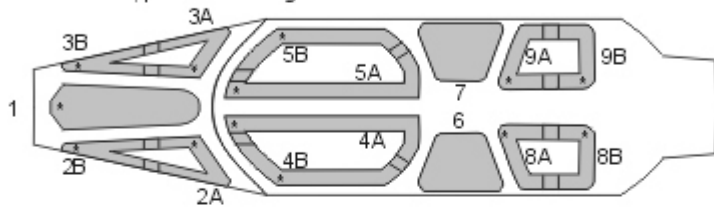
STEP 1 (erior view)  
mask interior, paint interior color



STEP 2  
mask exterior, paint seal color (light grey) - seal thickness is 0,5 mm



STEP 3  
mask exterior, paint camouflage color





Mi-8MT Hip-H BASIC kabuki masks

for Trumpeter No. 05815 kit

<http://mek.kosmo.cz/newware>

tom.nwkits@seznam.cz

**Important:**

Let the sprayed color dry before applying masks. Remove masks very carefully after painting.

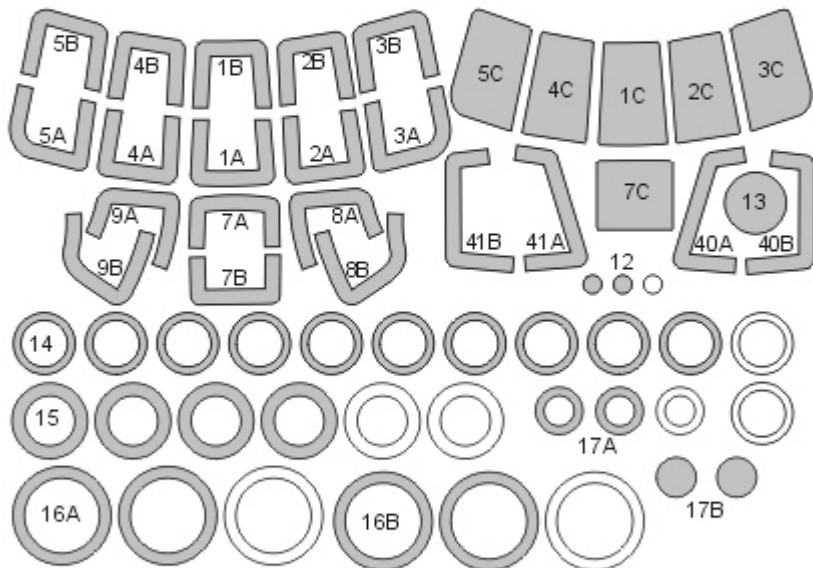
Where the mask is divided into A and B parts, first apply part A, next part B.

The set does not include masks for all areas, so mask the rest with masking tape or liquid mask.

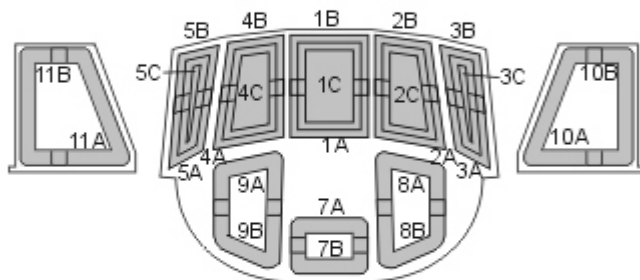
K kit part

^ start placing the mask from this point

Placing wet masks on wet surface is recommended, except those marked by **W**

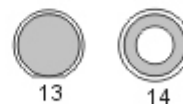


white - spare parts



K GP3-2

K GP3-3 K GP3-6



K C21+C14

K C6+C31

K D16



15

16A

16B

17A+B **W**

# NWAM1093

1/48 scale



Mi-8MT Hip-H EXPERT kabuki masks  
for Trumpeter No. 05815 kit  
[http://mek.kosmo.cz/new\\_ware](http://mek.kosmo.cz/new_ware)

INCLUDES ALSO WINDOWS  
INNER SIDE MASKS

tom.nwkits@seznam.cz

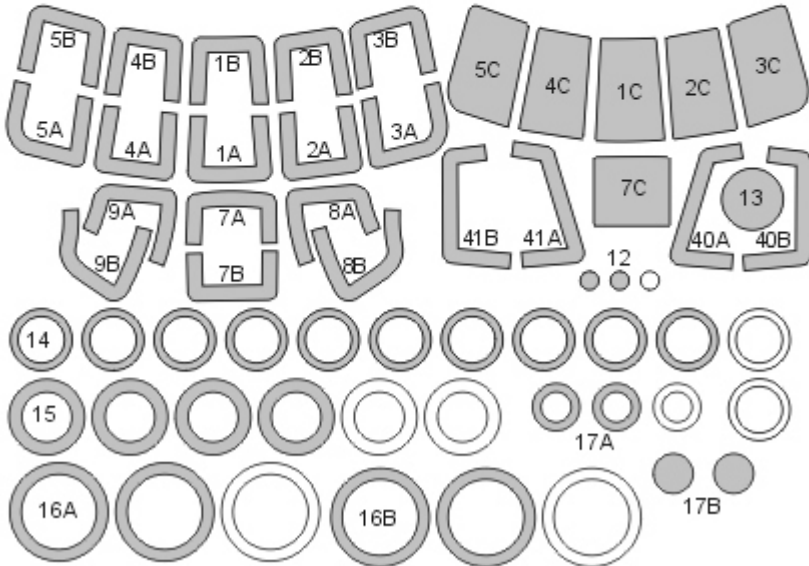
**Important:**

Let the sprayed color dry before applying masks. Remove masks very carefully after painting.  
Where the mask is divided into A and B parts, first apply part A, next part B.  
The set does not include masks for all areas, so mask the rest with masking tape or liquid mask.

K kit part

\* start placing the mask from this point

Placing wet masks on wet surface is recommended, except those marked by **W**

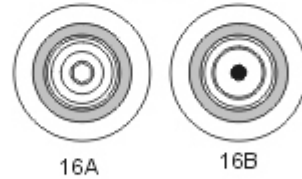


white - spare parts

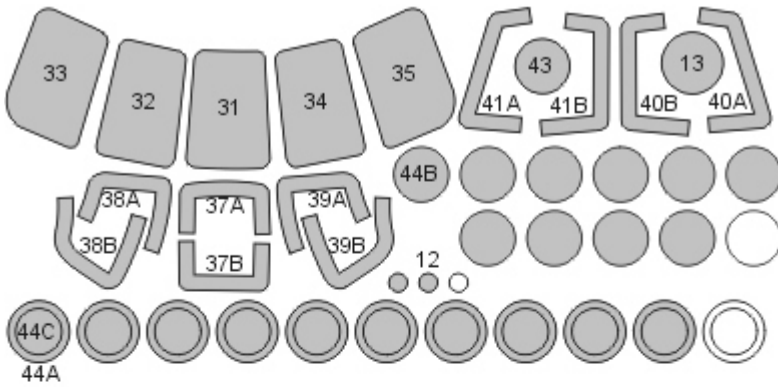
K C21+C14



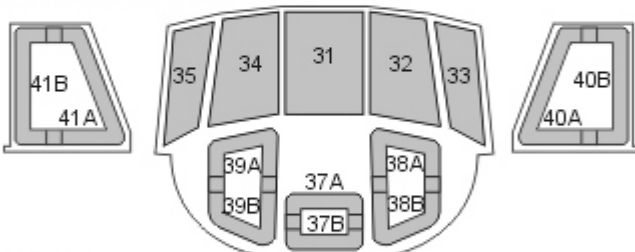
K C6+C31



K D16



STEP 1 - exterior view  
mask interior, paint interior color



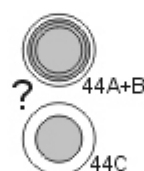
K GP 3-2



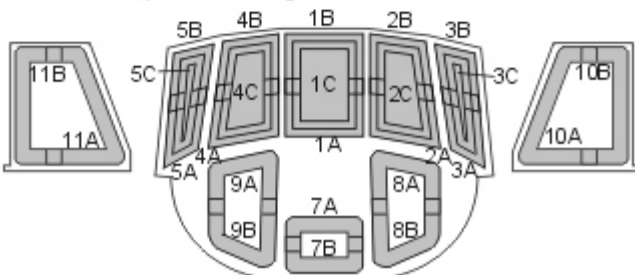
K GP 3-3



K GP 3-6



STEP 2  
mask exterior, paint camouflage color



K GP 3-2



K GP 3-3



K GP 3-6







## F-18F, EA-18G CORRECTION OF MENG F AND J MASKS

for Meng LS-013, LS-014 and LS-016 kits

<http://mek.kosmo.cz/newware>

tom.nwkits@seznam.cz

**Important:**

Let the sprayed color dry before applying masks. Remove masks very carefully after painting.

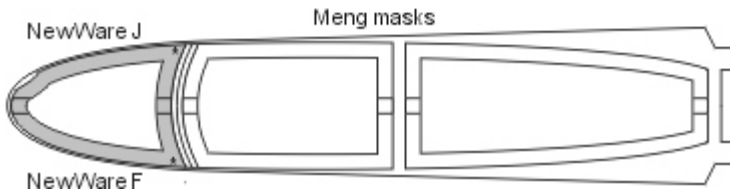
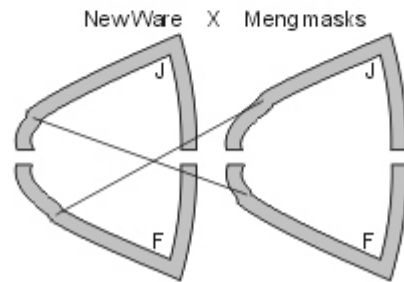
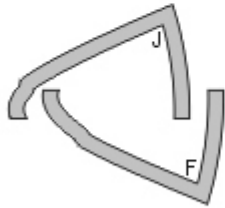
Where the mask is divided into A and B parts, first apply part A, next part B.

The set does not include masks for all areas, so mask the rest with masking tape or liquid mask.

K kit part

\* start placing the mask from this point

Placing wet masks on wet surface is recommended, except those marked by **W**





## U-2C Dragon Lady BASIC kabuki masks

for Hobbyboss 87271kit

<http://mek.kosmo.cz/newware>

tom.nwkits@seznam.cz

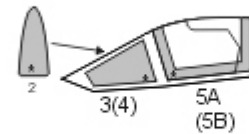
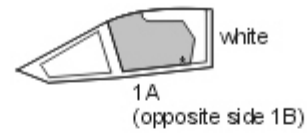
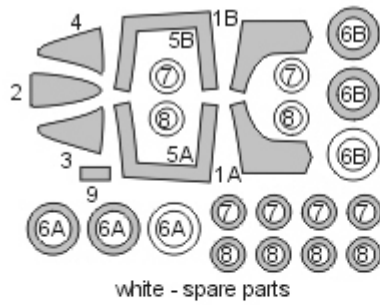
**Important:**

Let the sprayed color dry before applying masks. Remove masks very carefully after painting.  
 Where the mask is divided into A and B parts, first apply part A, next part B.  
 The set does not include masks for all areas, so mask the rest with masking tape or liquid mask.

K kit part

^ start placing the mask from this point

Placing wet masks on wet surface is recommended, except those marked by **W**





## U-2C Dragon Lady EXPERT kabuki masks

for Hobbyboss 87271kit

<http://mek.kosmo.cz/newware>

INCLUDES ALSO WINDOWS  
INNER SIDE MASKS

tom.nwkits@seznam.cz

### Important:

Let the sprayed color dry before applying masks. Remove masks very carefully after painting.

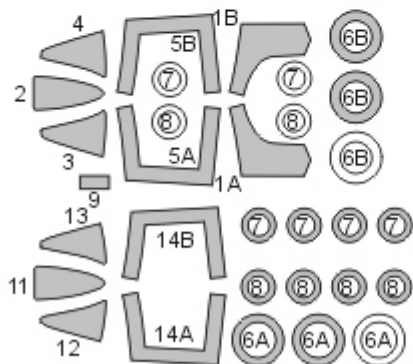
Where the mask is divided into A and B parts, first apply part A, next part B.

The set does not include masks for all areas, so mask the rest with masking tape or liquid mask.

K kit part

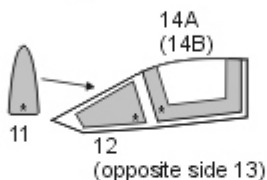
\* start placing the mask from this point

Placing wet masks on wet surface is recommended, except those marked by **W**



white - spare parts

STEP 1 - exterior view  
mask interior, paint interior color



STEP 2  
mask exterior

