



# NEW WARE NEWSLETTER

## NEW MASKS JANUARY 2026

|   |                      |
|---|----------------------|
| NWAM 1363 1/48 Yak-7B BASIC kabuki masks  | Zvezda               |
| NWAM 1364 1/48 Yak-7B EXPERT kabuki masks   | Zvezda               |
| NWAM 1365 1/48 Supermarine Spitfire TR.9 BASIC kabuki masks                         | Airfix               |
| NWAM 1366 1/48 Supermarine Spitfire TR.9 EXPERT kabuki masks                        | Airfix               |
| NWAM 1367 1/48 Mi G-21RADVANCED kabuki masks  | Eduard               |
| NWAM 1368 1/48 Mi G-21REXPRT kabuki masks   | Eduard               |
| NWAM 1369 1/48 Hawker Hurricane Mk.I (Sea Hurricane, Tropical&) BASIC kabuki masks  | Airfix               |
| NWAM 1370 1/48 Hawker Hurricane Mk.I (Sea Hurricane, Tropical&) EXPERT kabuki masks | Airfix               |
| NWAM 1371 1/48 B-26C Marauder BASIC kabuki masks                                    | ICM                  |
| NWAM 1372 1/48 B-26C Marauder EXPERT kabuki masks                                   | ICM                  |
| NWAM 1373 1/48 JAS-39D Gripen BASIC kabuki masks                                    | Italeri, Mistercraft |
| NWAM 1374 1/48 JAS-39D Gripen ADVANCED kabuki masks                                 | Italeri, Mistercraft |
| NWAM 1375 1/48 JAS-39D Gripen EXPERT kabuki masks                                   | Italeri, Mistercraft |
| NWAM 1176 1/48 P-47M Thunderbolt BASIC kabuki masks                                 | MiniArt              |
| NWAM 1177 1/48 P-47M Thunderbolt EXPERT kabuki masks                                | MiniArt              |



## Yak-7B BASIC kabuki masks

for Zvezda 4837 kit

<http://mek.kosmo.cz/newware>

tom.nwkits@seznam.cz

### Important:

Let the sprayed color dry before applying masks. Remove masks very carefully after painting.

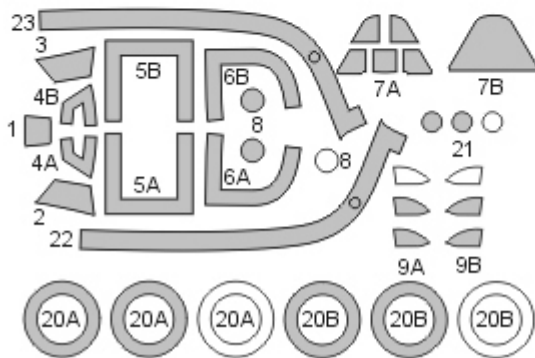
Where the mask is divided into A and B parts, first apply part A, next part B.

The set does not include masks for all areas, so mask the rest with masking tape or liquid mask.

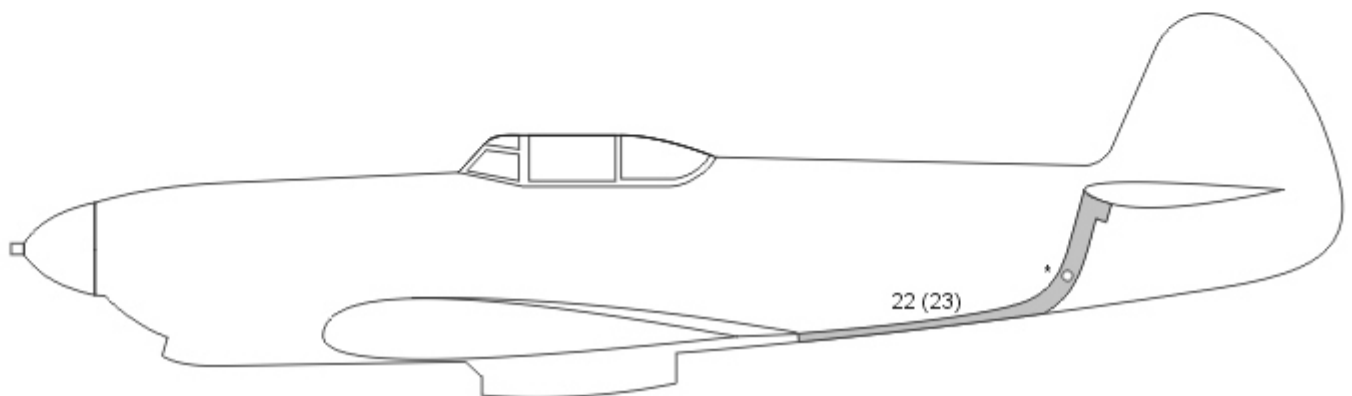
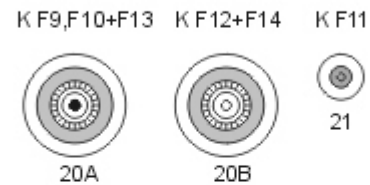
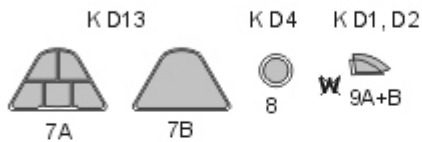
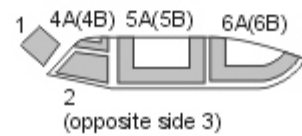
K kit part

\* start placing the mask from this point

Placing wet masks on wet surface is recommended, except those marked by **W**



WHITE - SPARE MASKS



# NWAM1364

1/48 scale



## Yak-7B EXPERT kabuki masks

### for Zvezda 4837 kit

<http://mek.kosmo.cz/newware>

INCLUDES ALSO AIRCRAFT CANOPY  
INNER SIDE MASKS

tom.nwkits@seznam.cz

#### Important:

Let the sprayed color dry before applying masks. Remove masks very carefully after painting.

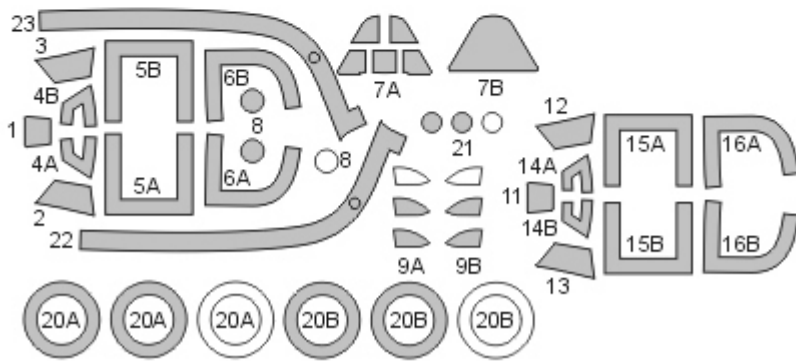
Where the mask is divided into A and B parts, first apply part A, next part B.

The set does not include masks for all areas, so mask the rest with masking tape or liquid mask.

K kit part

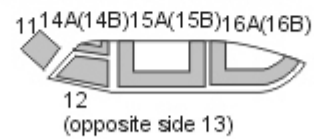
\* start placing the mask from this point

Placing wet masks on wet surface is recommended, except those marked by **W**

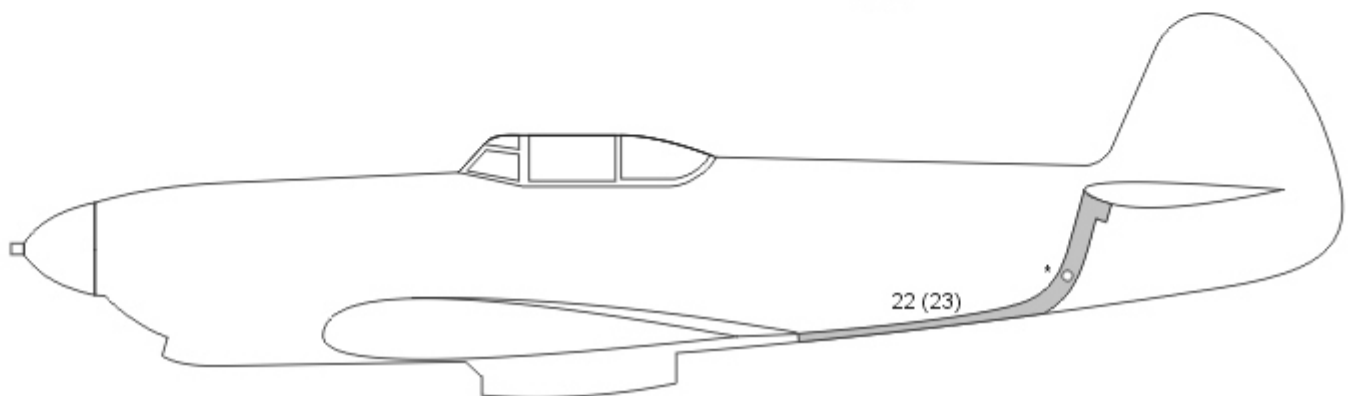
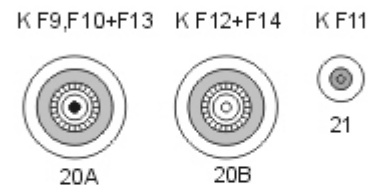
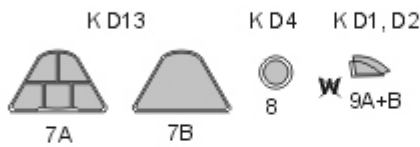
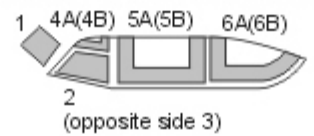


WHITE - SPARE MASKS

STEP 1 - exterior view  
mask interior, paint interior color



STEP 2  
mask exterior, paint camouflage color





## Supermarine Spitfire TR.9 BASIC kabuki masks

for Airfix A05143 kit

<http://mek.kosmo.cz/newware>

tom.nwkits@seznam.cz

### Important:

Let the sprayed color dry before applying masks. Remove masks very carefully after painting.

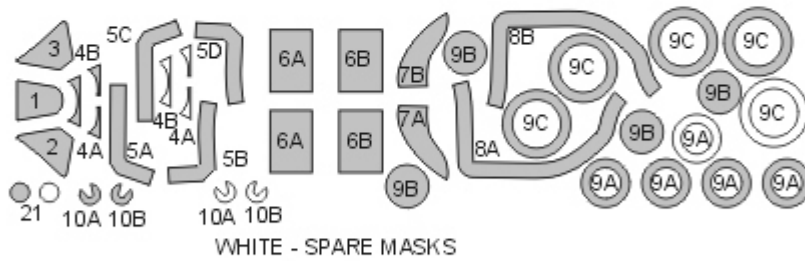
Where the mask is divided into A and B parts, first apply part A, next part B.

The set does not include masks for all areas, so mask the rest with masking tape or liquid mask.

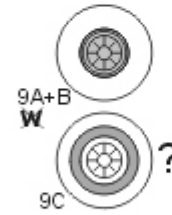
K kit part

\* start placing the mask from this point

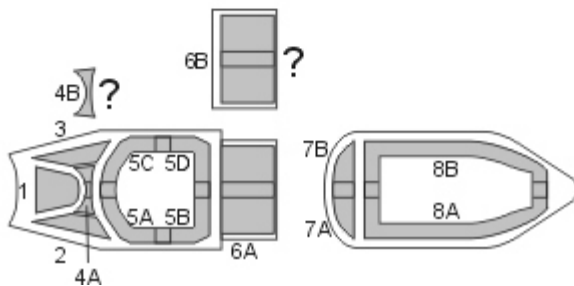
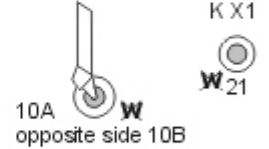
Placing wet masks on wet surface is recommended, except those marked by **W**



K D9,D10+D8, D13,D14



K D3



# NWAM1366

1/48 scale



## Supermarine Spitfire TR.9 EXPERT kabuki masks

for Airfix A05143 kit

<http://mek.kosmo.cz/newware>

INCLUDES ALSO AIRCRAFT CANOPY  
INNER SIDE MASKS

tom.nwkits@seznam.cz

### Important:

Let the sprayed color dry before applying masks. Remove masks very carefully after painting.

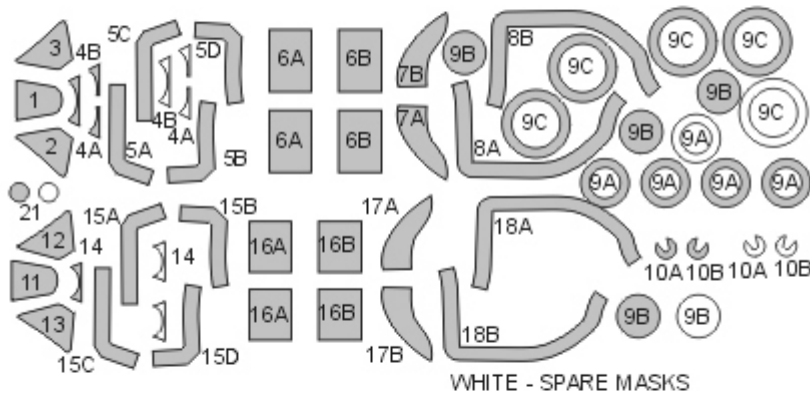
Where the mask is divided into A and B parts, first apply part A, next part B.

The set does not include masks for all areas, so mask the rest with masking tape or liquid mask.

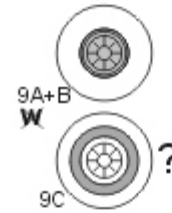
K kit part

\* start placing the mask from this point

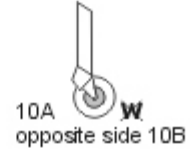
Placing wet masks on wet surface is recommended, except those marked by **W**



K D9,D10+D8, D13,D14



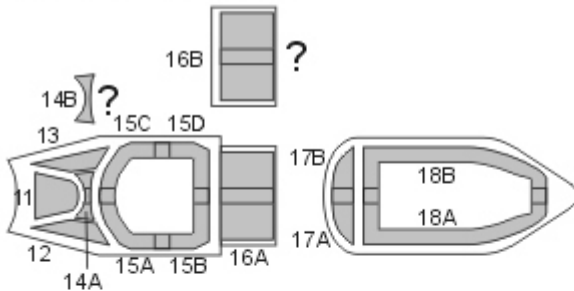
K D3



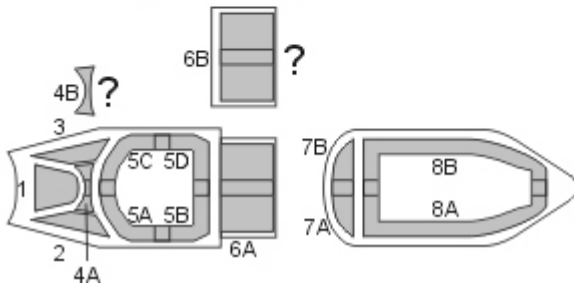
K X1



STEP 1 - exterior view  
mask interior, paint interior color



STEP 2  
mask exterior, paint camouflage color





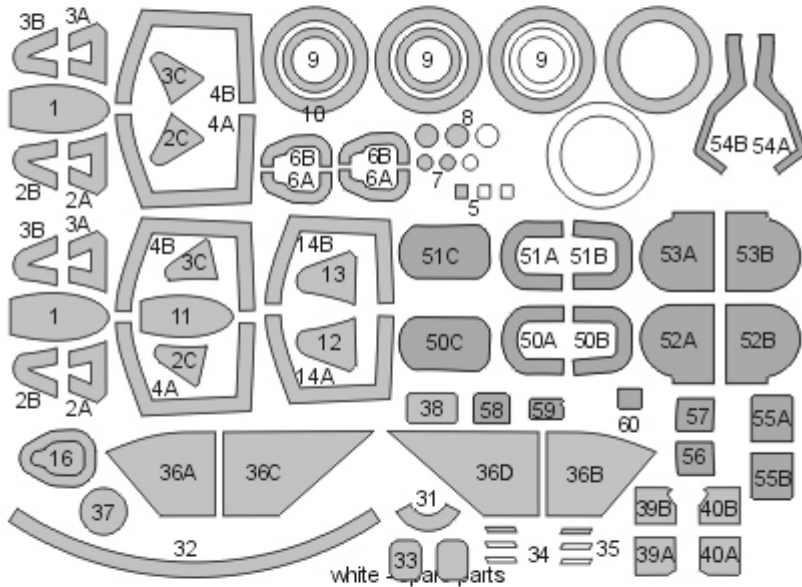
MiG-21R ADVANCED kabuki masks  
for Eduard 8238, 8423 and other kits  
<http://mek.kosmo.cz/newware>

INCLUDES ALSO  
WINDOWS SEAL  
AND CAMOUFLAGE MASKS

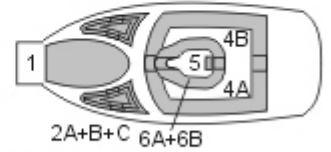
tom.nwkits@seznam.cz

**Important:**

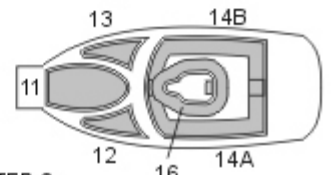
Let the sprayed color dry before applying masks. Remove masks very carefully after painting.  
Where the mask is divided into A and B parts, first apply part A, next part B.  
The set does not include masks for all areas, so mask the rest with masking tape or liquid mask.  
K kit part  
\* start placing the mask from this point  
Placing wet masks on wet surface is recommended, except those marked by **W**



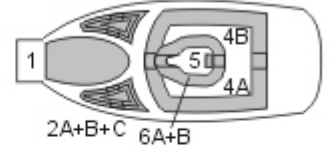
STEP 1  
mask exterior, paint interior color  
3A+B+C



STEP 2  
mask exterior, paint seal color  
13 14B



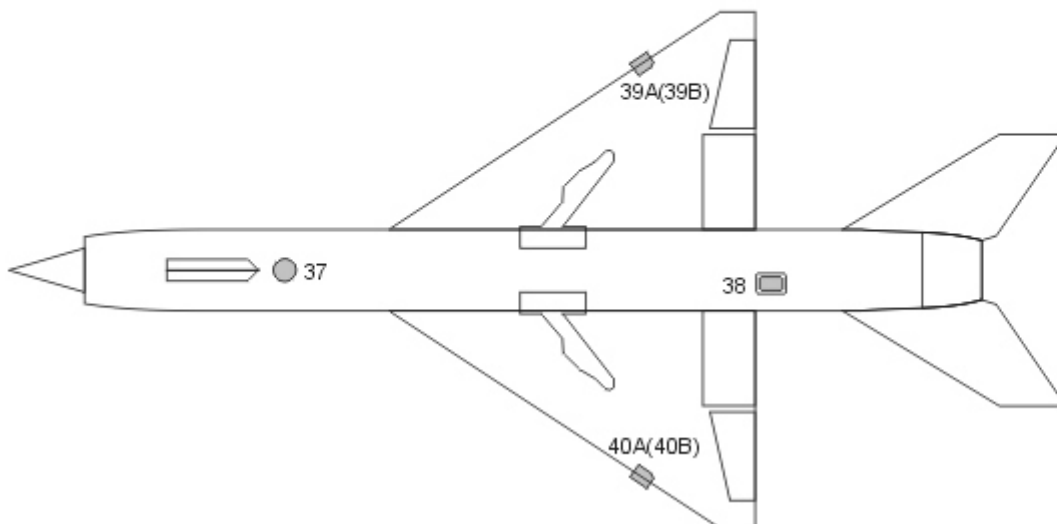
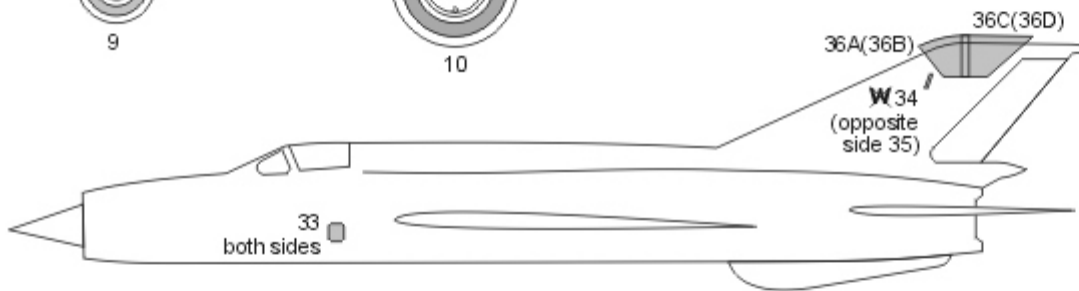
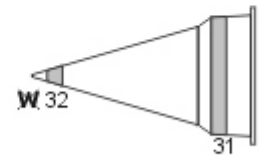
STEP 3  
mask exterior, paint camouflage color  
3A+B+C



K D21+D15+D16+D22 K D12(D13)+D77+D76+D14+D17(D18)



K G7 K G2  
**W** 7 **W** 8



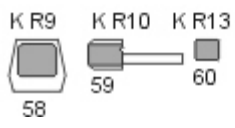
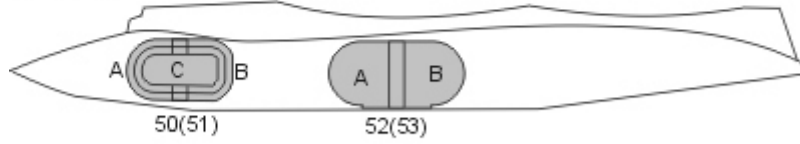
K R1+R2



K R3+R4



K R35+R38



# NWAM1368



MiG-21REXPERT kabuki masks  
for Eduard 8238, 84123 and other kits  
<http://mek.kosmo.cz/newware>

INCLUDES ALSO  
WINDOWS SEAL AND INNER SIDE  
MASKS AND CAMOUFLAGE MASKS

1/48 scale

tom.nwkits@seznam.cz

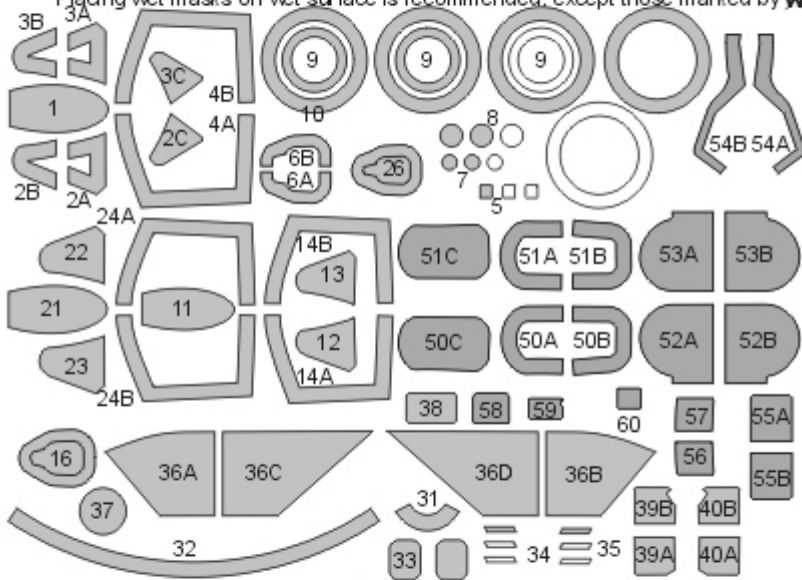
### Important:

Let the sprayed color dry before applying masks. Remove masks very carefully after painting.  
Where the mask is divided into A and B parts, first apply part A, next part B.  
The set does not include masks for all areas, so mask the rest with masking tape or liquid mask.

K kit part

\* start placing the mask from this point

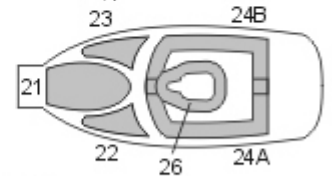
Placing wet masks on wet surface is recommended, except those marked by **W**



white - spare parts

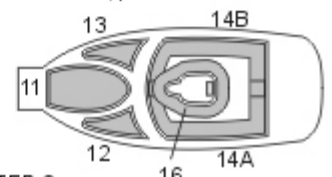
### STEP 1 - exterior view

mask interior, paint interior color



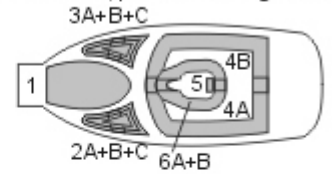
### STEP 2

mask exterior, paint seal color



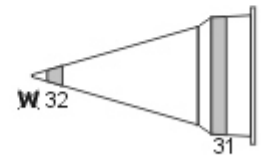
### STEP 3

mask exterior, paint camouflage color



K D21+D15+D16+D22 K D12(D13)+D77+D76+D14+D17(D18)

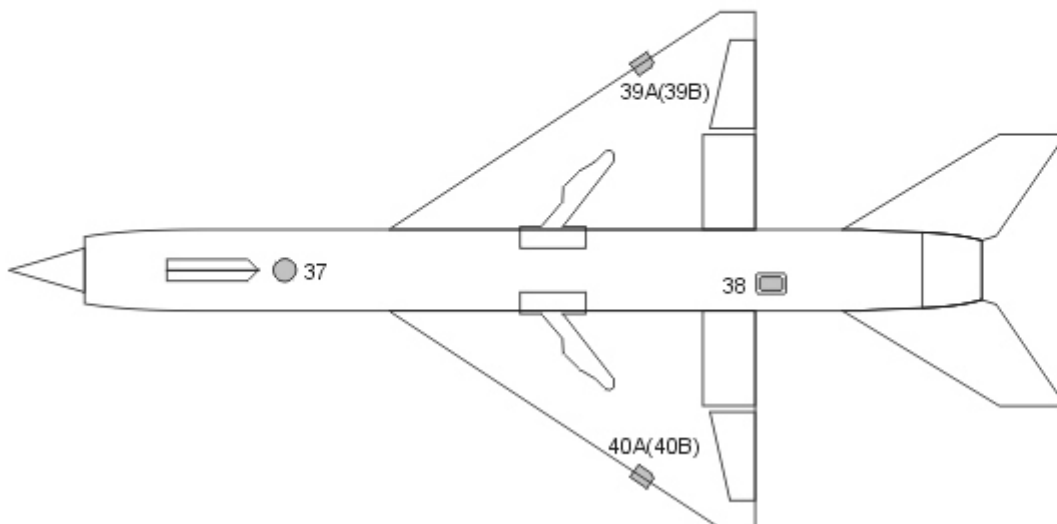
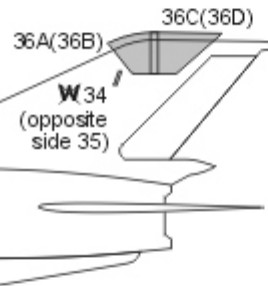
K G7 K G2  
**W** 7 **W** 8



9



10



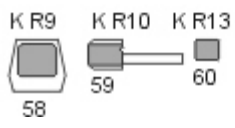
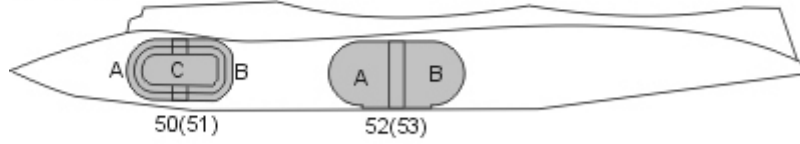
K R1+R2



K R3+R4



K R35+R38





## Hawker Hurricane Mk.I (Sea Hurricane, Tropical...) BASIC kabuki masks

for Airfix A05127(A) and related kits

<http://mek.kosmo.cz/newware>

tom.nwkits@seznam.cz

### Important:

Let the sprayed color dry before applying masks. Remove masks very carefully after painting.

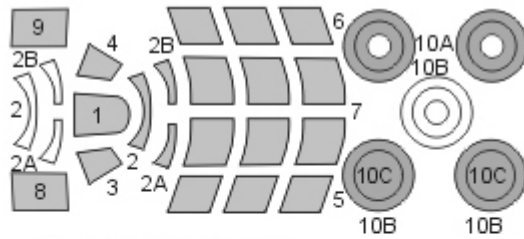
Where the mask is divided into A and B parts, first apply part A, next part B.

The set does not include masks for all areas, so mask the rest with masking tape or liquid mask.

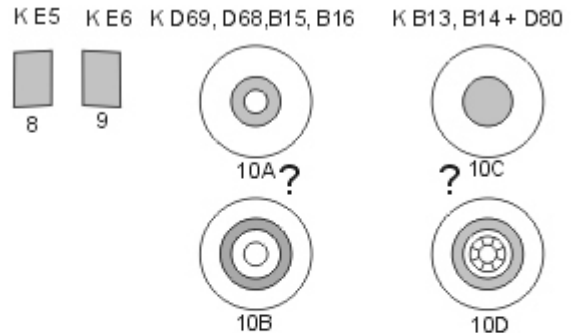
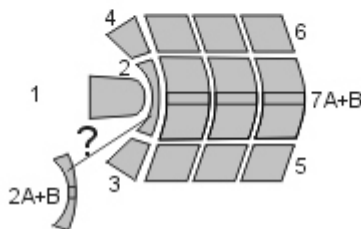
K kit part

\* start placing the mask from this point

Placing wet masks on wet surface is recommended, except those marked by **W**



WHITE - SPARE MASKS



# NWAM1370



Hawker Hurricane Mk.I (Sea Hurricane, Tropical...) EXPERT kabuki masks

for Airfix A05127(A) and related kits

<http://mek.kosmo.cz/newware>

1/48 scale  
INCLUDES ALSO AIRCRAFT CANOPY  
INNER SIDE MASKS  
tom.nwkits@seznam.cz

### Important:

Let the sprayed color dry before applying masks. Remove masks very carefully after painting.

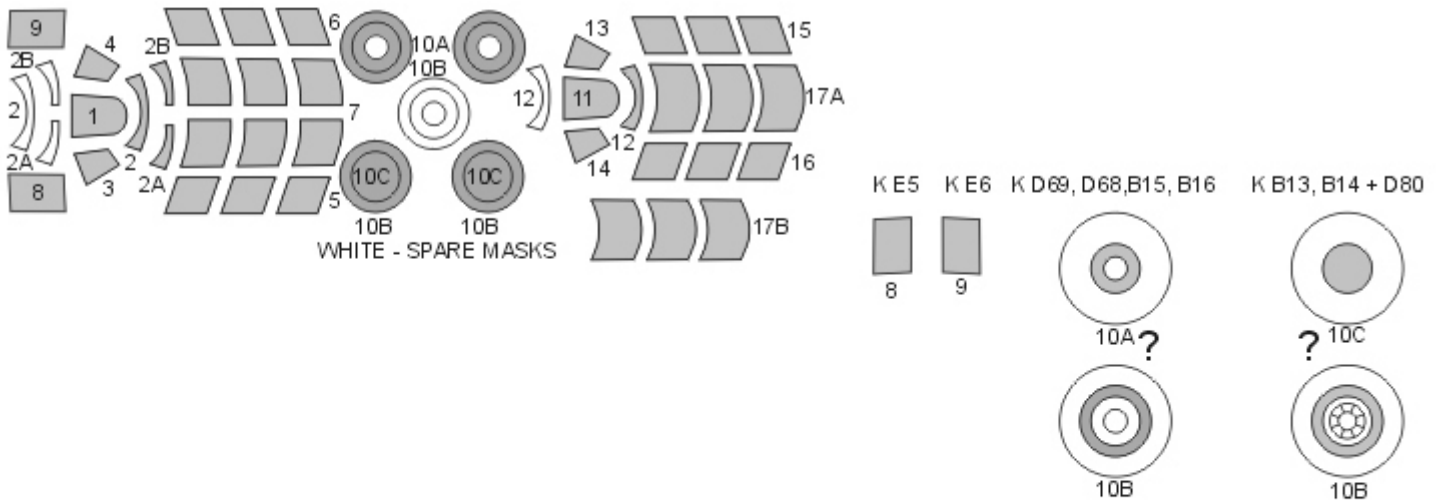
Where the mask is divided into A and B parts, first apply part A, next part B.

The set does not include masks for all areas, so mask the rest with masking tape or liquid mask.

K kit part

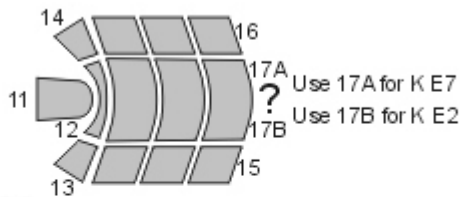
\* start placing the mask from this point

Placing wet masks on wet surface is recommended, except those marked by **W**



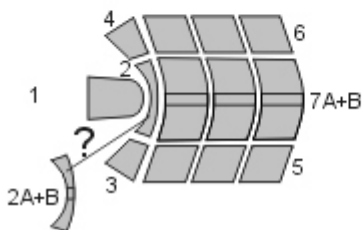
### STEP 1 (exterior view)

mask interior, paint interior color



### STEP 2

mask exterior, paint camouflage color





## B-26C Marauder BASIC kabuki masks

for ICM 48328 and 48324 kits

<http://mek.kosmo.cz/newware>

tom.nwkits@seznam.cz

### Important:

Let the sprayed color dry before applying masks. Remove masks very carefully after painting.

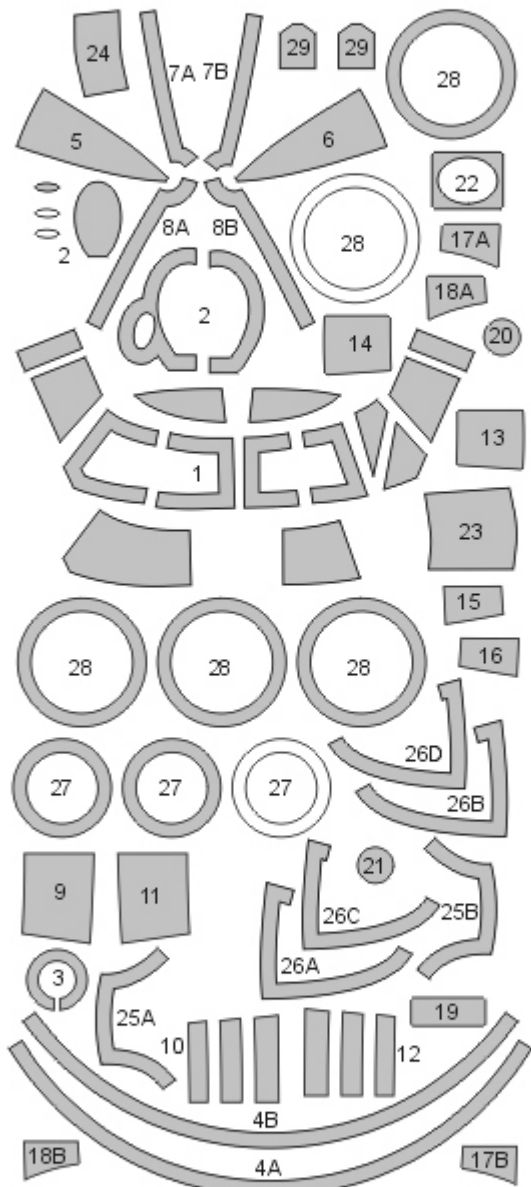
Where the mask is divided into A and B parts, first apply part A, next part B.

The set does not include masks for all areas, so mask the rest with masking tape or liquid mask.

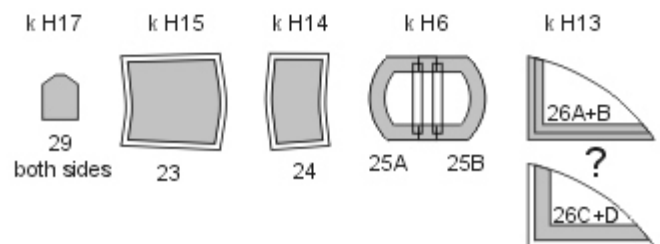
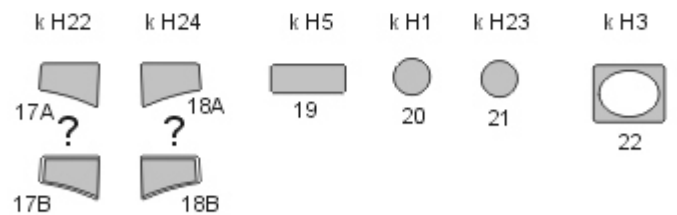
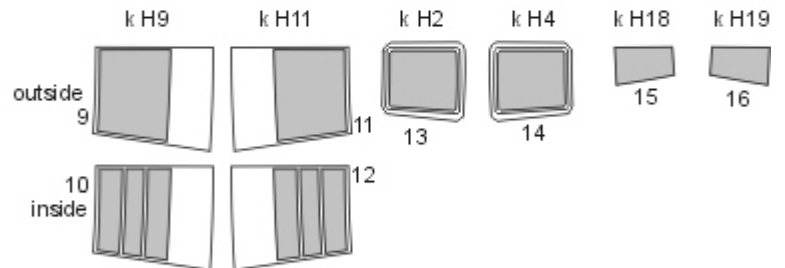
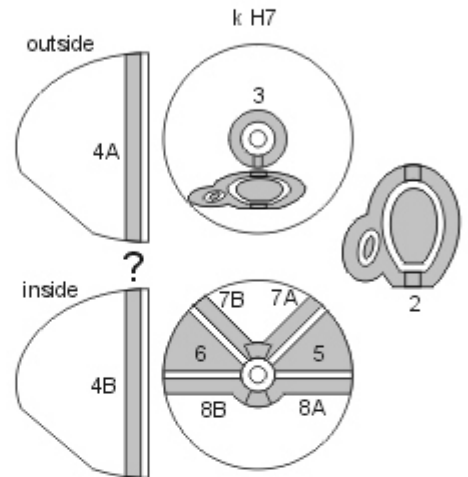
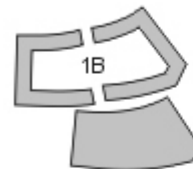
K kit part

\* start placing the mask from this point

Placing wet masks on wet surface is recommended, except those marked by **W**

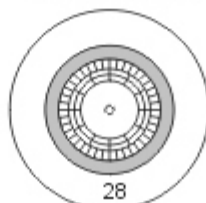


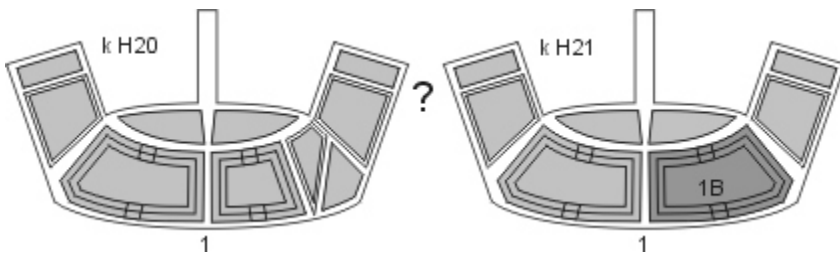
white - spare parts



? k K13+D20+K21  
? k F54+D20+F56

k D34+D21+D33







# NWAM1372

## B-26C Marauder EXPERT kabuki masks

### for ICM 48328 and 48324 kits

<http://mek.kosmo.cz/newware>

*Includes also windows  
inner side masks, camouflage detail  
and bombs yellow stripes masks*

1/48 scale

tom.nwkits@seznam.cz

#### Important:

Let the sprayed color dry before applying masks. Remove masks very carefully after painting.

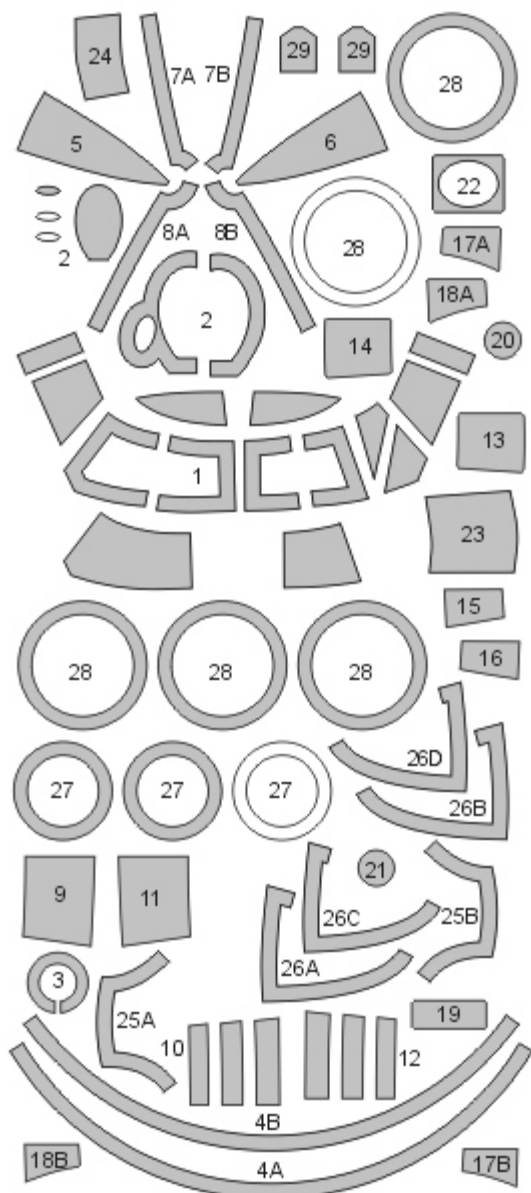
Where the mask is divided into A and B parts, first apply part A, next part B.

The set does not include masks for all areas, so mask the rest with masking tape or liquid mask.

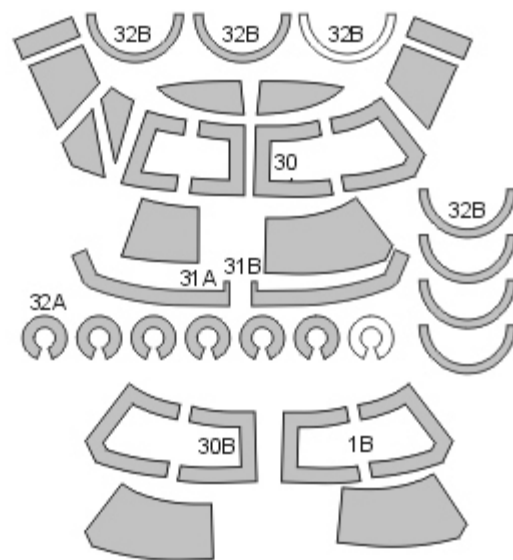
K kit part

^ start placing the mask from this point

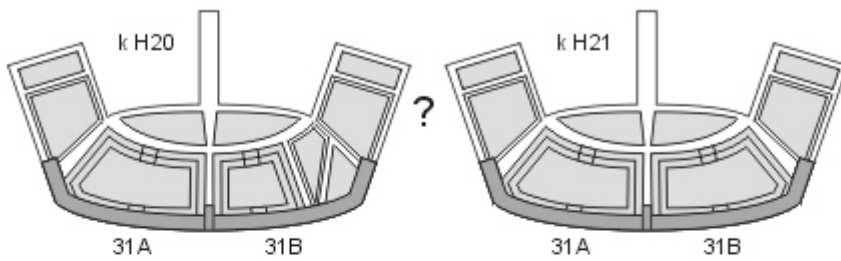
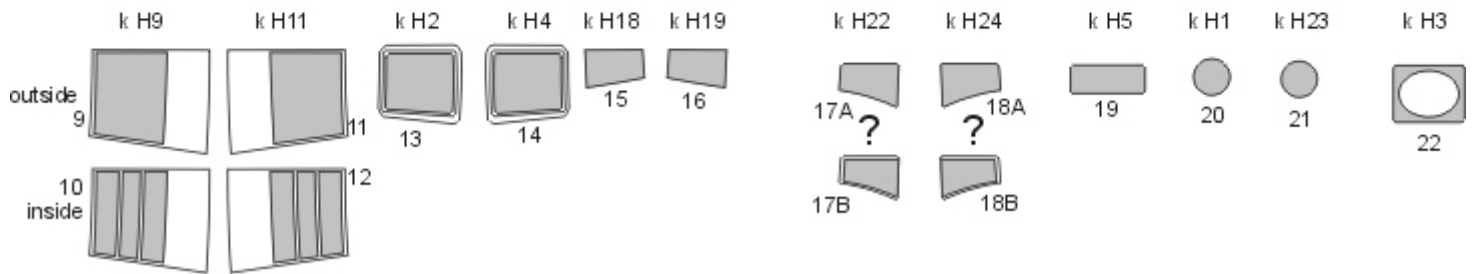
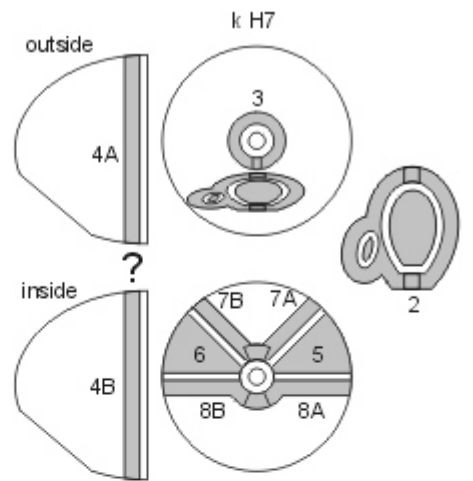
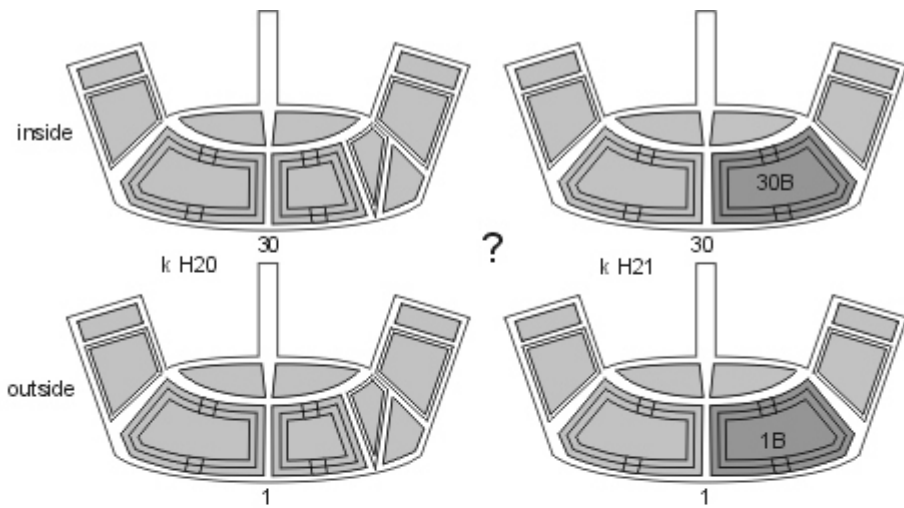
Placing wet masks on wet surface is recommended, except those marked by **W**



white - spare parts



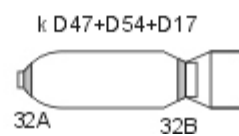
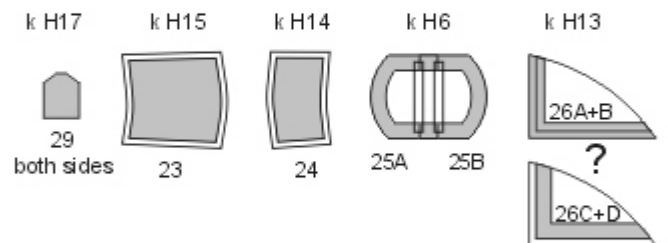
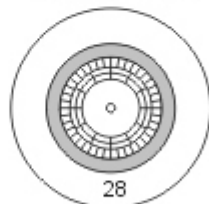
white - spare parts



? k K13+D20+K21  
k F54+D20+F56



k D34+D21+D33



# NWAM1373

1/48 scale



JAS-390 Gripen BASIC kabuki masks  
for Italeri 2664 and Mistercraft G200 kits  
<http://mek.kosmo.cz/newware>

tom.nwkits@seznam.cz

### Important:

Let the sprayed color dry before applying masks. Remove masks very carefully after painting.

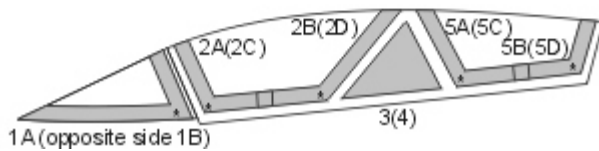
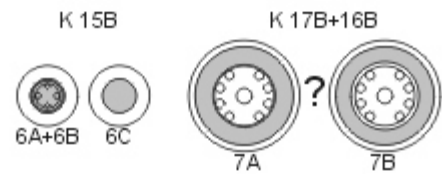
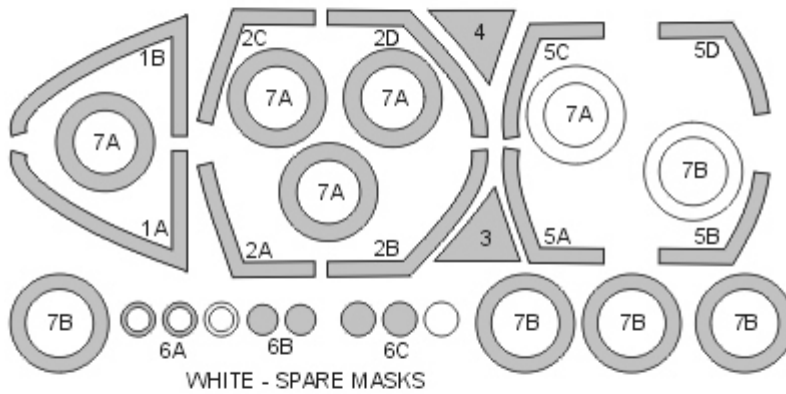
Where the mask is divided into A and B parts, first apply part A, next part B.

The set does not include masks for all areas, so mask the rest with masking tape or liquid mask.

K kit part

\* start placing the mask from this point

Placing wet masks on wet surface is recommended, except those marked by **W**



# NWAM1374

1/48 scale



JAS-39D Gripen ADVANCED kabuki masks  
for Italeri 2664 and Mistercraft G200 kits  
<http://mek.kosmo.cz/newware>

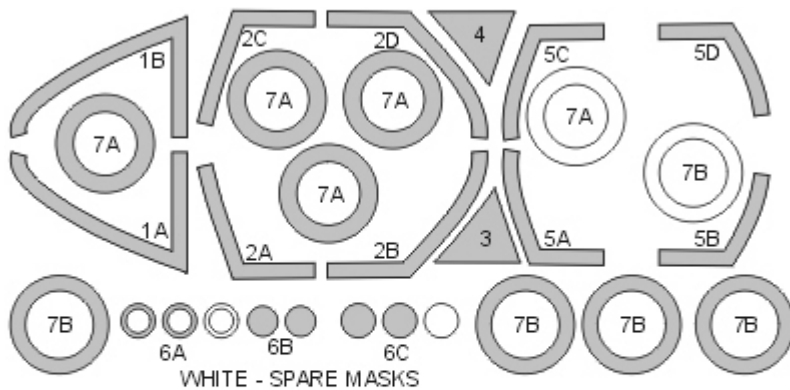
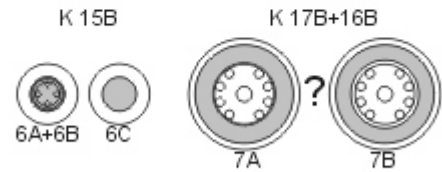
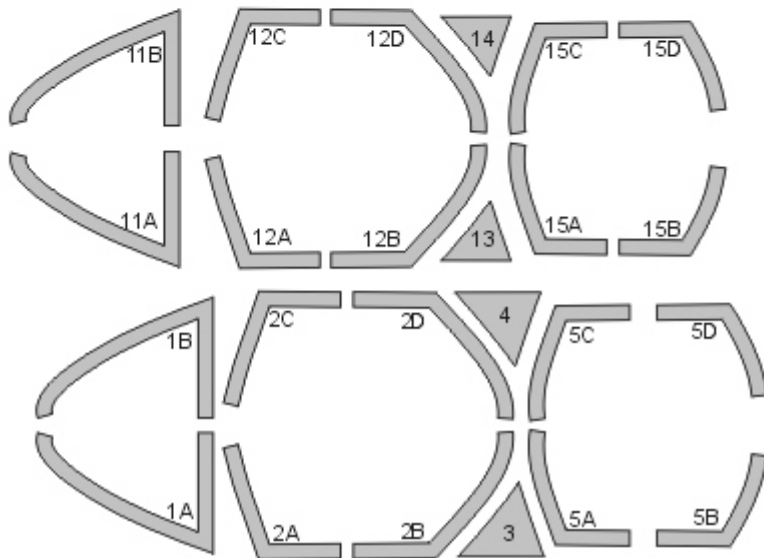
INCLUDES ALSO AIRCRAFT CANOPY  
SEAL MASKS

tom.nwkits@seznam.cz

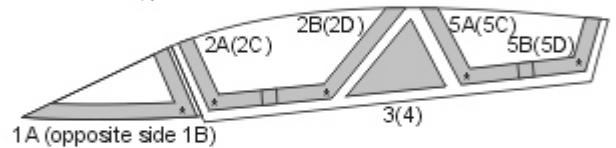
**Important:**

Let the sprayed color dry before applying masks. Remove masks very carefully after painting.  
Where the mask is divided into A and B parts, first apply part A, next part B.  
The set does not include masks for all areas, so mask the rest with masking tape or liquid mask.  
K kit part

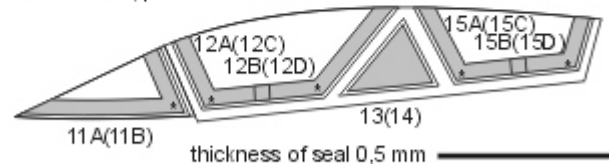
\* start placing the mask from this point  
Placing wet masks on wet surface is recommended, except those marked by **W**



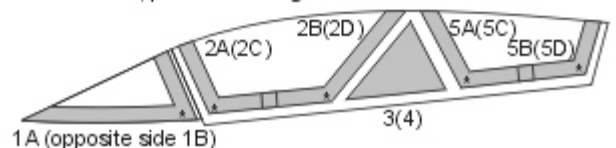
STEP 1  
mask exterior, paint interior color



STEP 2  
mask exterior, paint seal color



STEP 3  
mask exterior, paint camouflage color



# NWAM1375

1/48 scale



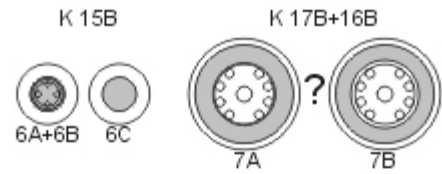
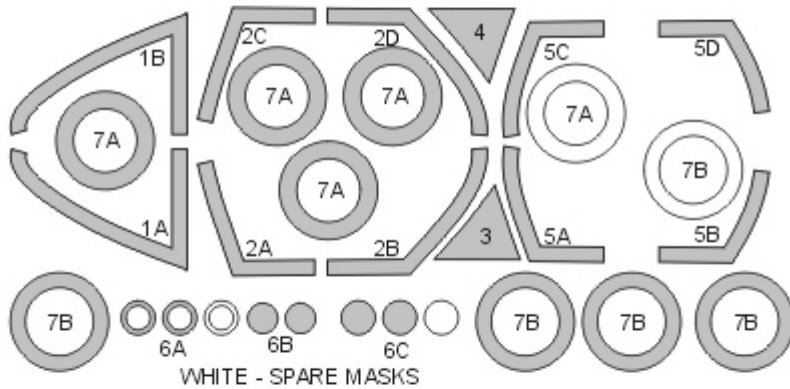
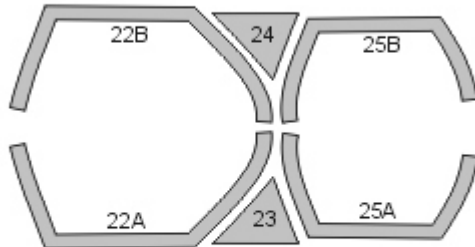
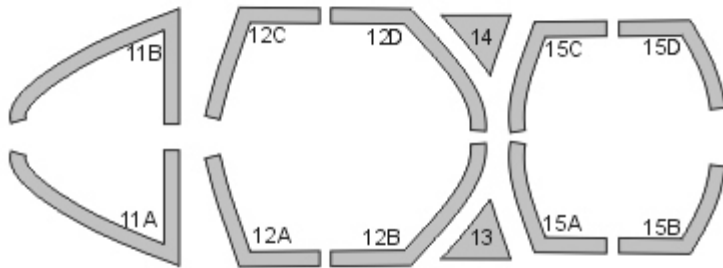
JAS-39D Gripen EXPERT kabuki masks  
for Italeri 2664 and Mistercraft G200 kits  
<http://mek.kosmo.cz/newware>

INCLUDES ALSO AIRCRAFT CANOPY  
SEAL AND INNER SIDE MASKS

tom.nwkits@seznam.cz

### Important:

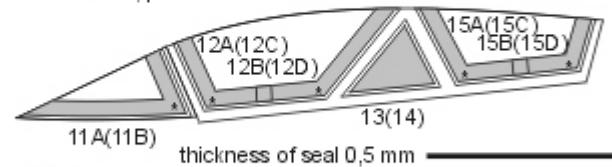
Let the sprayed color dry before applying masks. Remove masks very carefully after painting.  
Where the mask is divided into A and B parts, first apply part A, next part B.  
The set does not include masks for all areas, so mask the rest with masking tape or liquid mask.  
K kit part  
\* start placing the mask from this point  
Placing wet masks on wet surface is recommended, except those marked by **W**



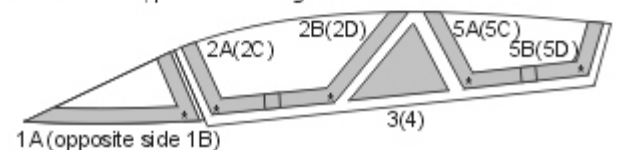
STEP 1 (exterior view)  
mask interior, paint interior color



STEP 2  
mask exterior, paint seal color



STEP 3  
mask exterior, paint camouflage color





P-47M Thunderbolt BASIC kabuki masks  
for MiniArt 48060, 48032 and other kits  
<http://mek.kosmo.cz/newware>

tom.nwkits@seznam.cz

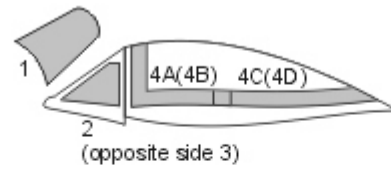
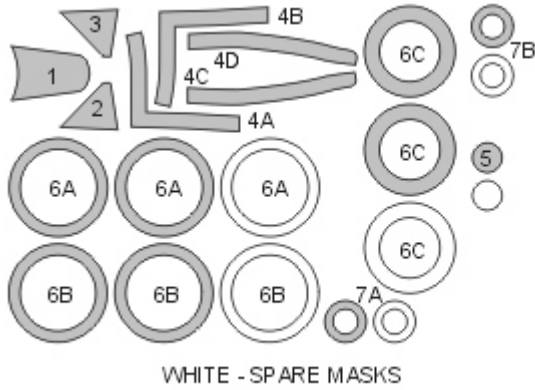
**Important:**

Let the sprayed color dry before applying masks. Remove masks very carefully after painting.  
Where the mask is divided into A and B parts, first apply part A, next part B.  
The set does not include masks for all areas, so mask the rest with masking tape or liquid mask.

K kit part

^ start placing the mask from this point

Placing wet masks on wet surface is recommended, except those marked by **W**

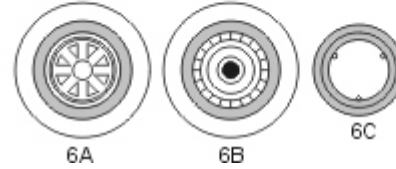


K D1+D3+(Cd1 ,Cd2,Cd3)  
D2+D4+(Cd1 ,Cd2,Cd3)

K Gb5



5



K D20(D21)





# NWAM1377

## P-47M Thunderbolt EXPERT kabuki masks for MiniArt 48060, 48032 and other kits [http://mek.kosmo.cz/new\\_ware](http://mek.kosmo.cz/new_ware)

INCLUDES ALSO AIRCRAFT  
CANOPY INNER SIDE AND  
BOMBS YELLOW STRIPES MASKS

1/48 scale

tom.nwkits@seznam.cz

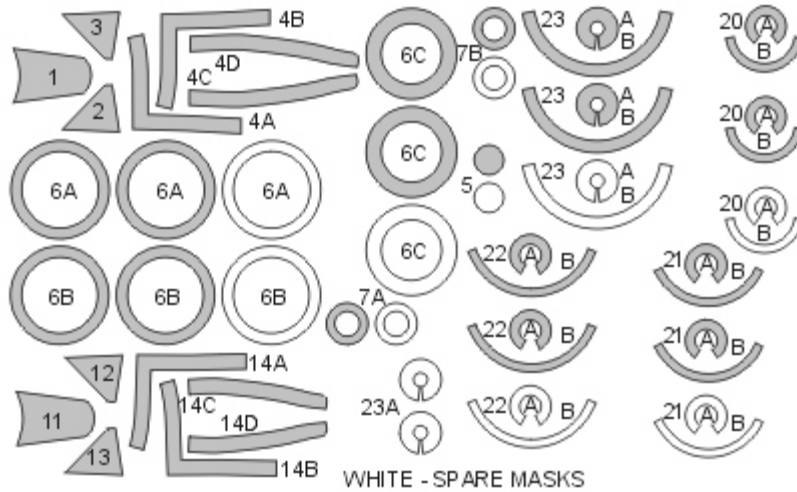
### Important:

Let the sprayed color dry before applying masks. Remove masks very carefully after painting.  
Where the mask is divided into A and B parts, first apply part A, next part B.  
The set does not include masks for all areas, so mask the rest with masking tape or liquid mask.

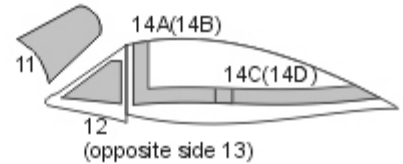
K kit part

^ start placing the mask from this point

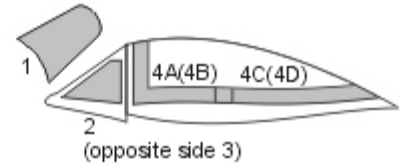
Placing wet masks on wet surface is recommended, except those marked by **W**



STEP 1 - exterior view  
mask interior, paint interior color



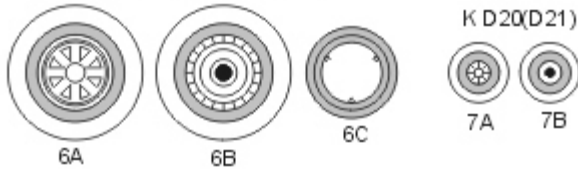
STEP 2  
mask exterior, paint camouflage color



K D1+D3+(Cd1,Cd2,Cd3)  
D2+D4+(Cd1,Cd2,Cd3)

K Gb5

5



K D20(D21)

K Cb11+Cb12

K Cb9+Cb10

K Cb15+Cb16

K Cb17+Cb18

